

Pull out the bottom of your closet to reveal a ready-to-use wall bed suitable for children and adults, thanks to its capacity of 190 kg!



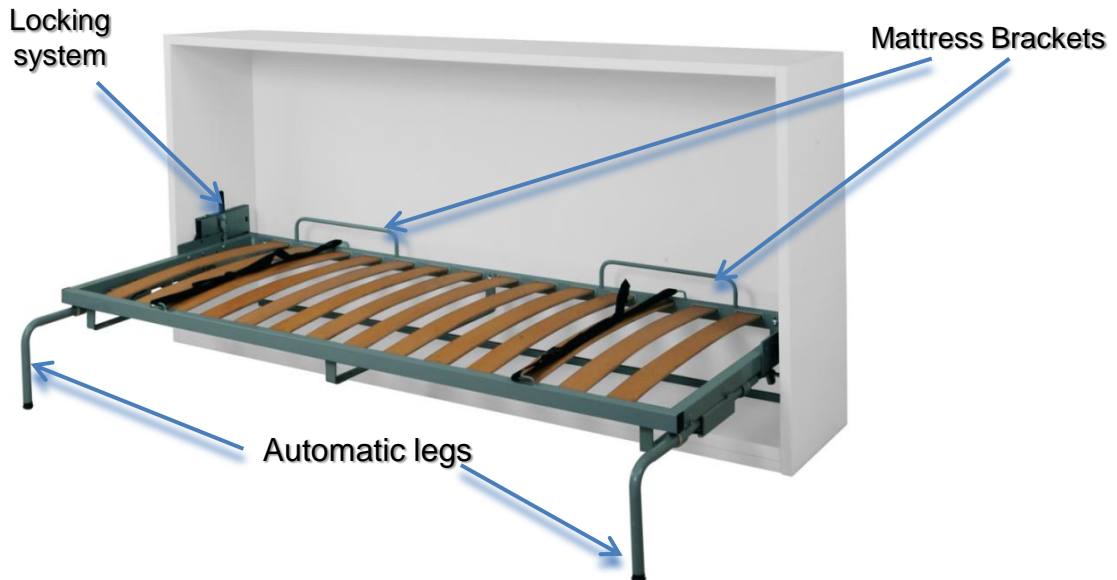
### Important information

- ✓ Cabinet not included.



### Advantages and benefits

- ✓ This mechanism includes a locking system for when the bed is down, ensuring added safety and better performance.
- ✓ This product is designed with a high load capacity so that anyone can sleep in it.
- ✓ The top of the closet can also accommodate a Murphy bed mechanism (see product XULT36WBHX).
- ✓ Helps to maximize the space in a room.
- ✓ One SKU for all the required components.
- ✓ The base includes 13 slats, each made of six layers of birch, bent and glued under pressure to ensure the best possible support.
- ✓ As comfortable as your own bed!
- ✓ Features restraints to hold the mattress in place.
- ✓ The mounting instructions are available on our website.



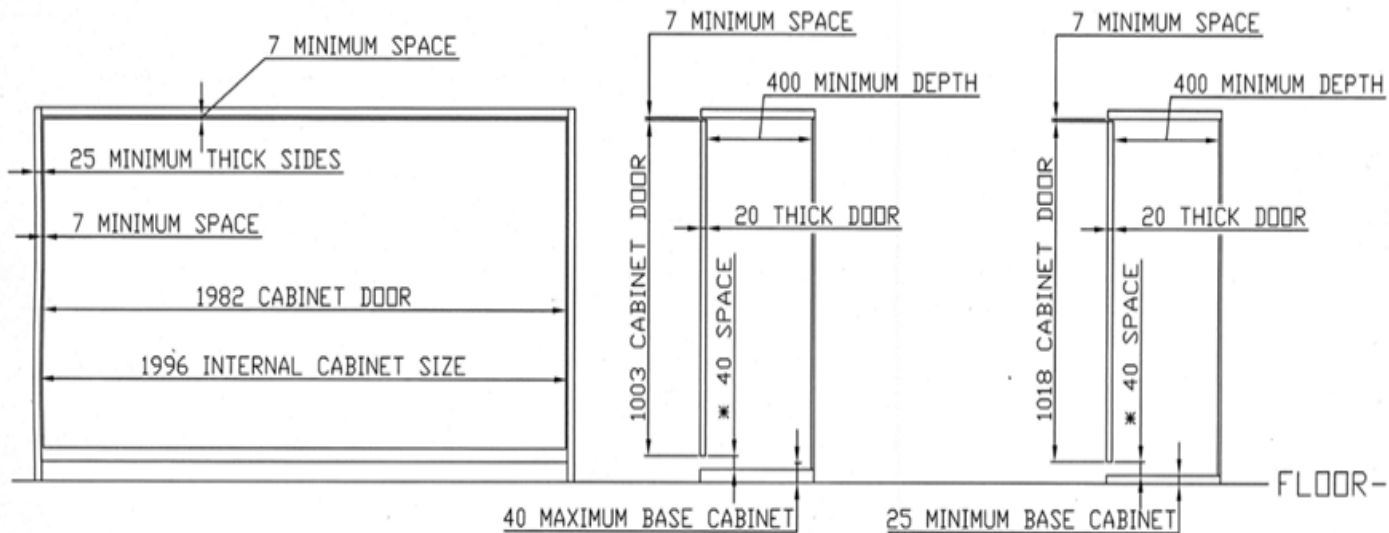
Product number	Description	Static Load Rating
XULT36WBHZ	Horizontal Wall Bed Set, 940 mm (37") x 1930 mm (76")	190 kg (418 lb.)



Additional information:  
Required cabinet dimensions

BASE CABINET 40mm MAXIMUM

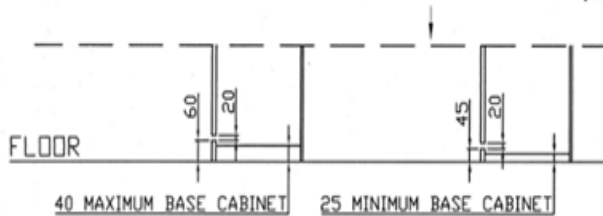
BASE CABINET 25mm MINIMUM



THICK MATTRESSES 180mm

\* - MINIMUM SPACE INDISPENSABLE FROM BASE CABINET TO DOOR CABINET, IF YOU WANT REDUCE THIS SPACE PUT A SMALL BASE IN FRONT OF THE BASE CABINET. SEE THE DRAWING

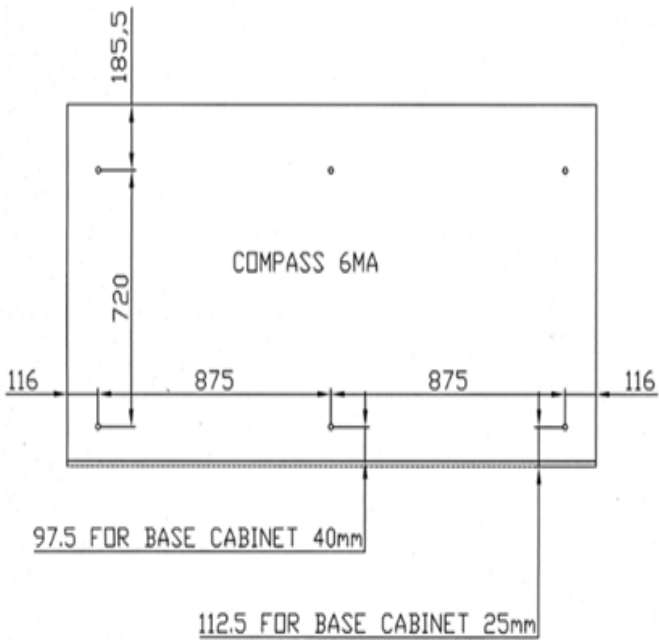
ATTENTION: FOR THE DIFFERENT DIMENSIONS OF THE BASE (25 - 40) REMEMBER TO CHANGE THE DIMENSION OF THE DOOR CABINET



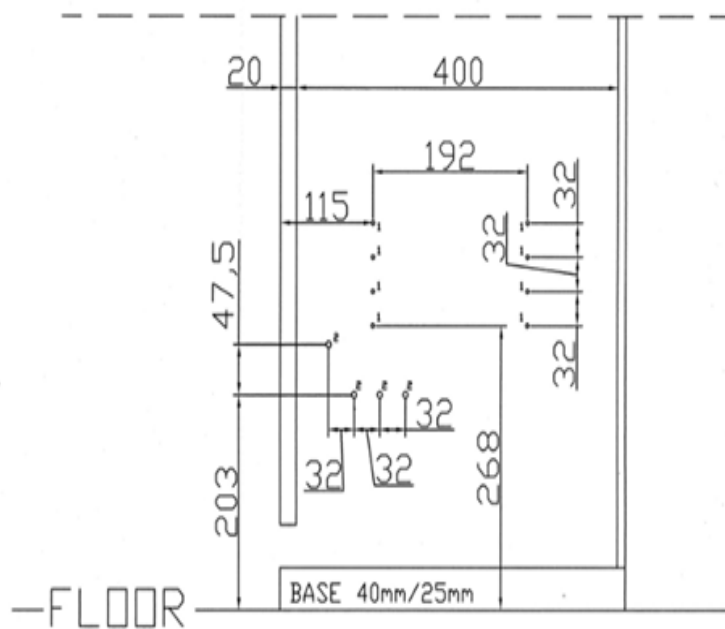


Additional information:  
Drilling template

### HOLES CABINET DOOR



### HOLES CABINET SIDES

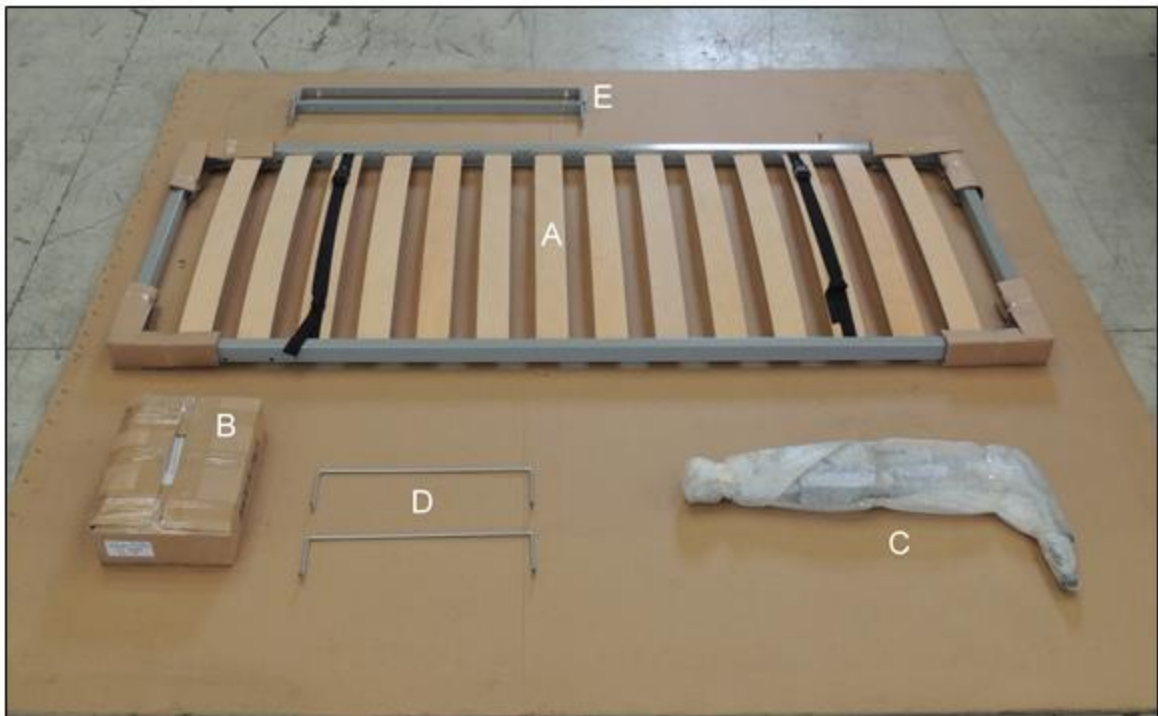


HOLES 1 COMPASS 4MA  
HOLES 2 COMPASS 6MA



Additional information:  
Included products

### XULT36WBHZ



A – Metal base

B – Mechanism plates + mounting screw

C – Automatic leg

D – Mattress restraint

E – Plate to fix panel