

Richelieu Convey your ideas



B

o



White

a



Tack

r



Cork

d



Chalk

s



Directory &
Bulletin

Richelieu

your options for
visual excellence

Richelieu, together with its subsidiaries has been manufacturing quality whiteboards, chalkboards and tackboards since 1964. With over 40 years of experience in this field, we have continually improved the quality and function of these products to become one of Canada's leading manufacturers. As an industry leader, Richelieu remains committed to producing and supplying the very best products that will provide years of functionality and trouble-free use.

whiteboards

tackboards

corkboards

chalkboards

directory & bulletin boards

1 **Richelieu**

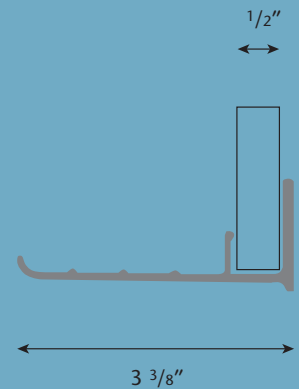
magnetic whiteboards



WHITEBOARD PORCELAIN ENAMEL ON STEEL SURFACE

- MB3004430** 4' x 4' framed, complete with full-length marker trough
- MB3006430** 6' x 4' framed, complete with full-length marker trough
- MB3008430** 8' x 4' framed, complete with full-length marker trough
- MB30012430** 12' x 4' framed, complete with full-length marker trough
- MBB1230** 8' x 4' unframed

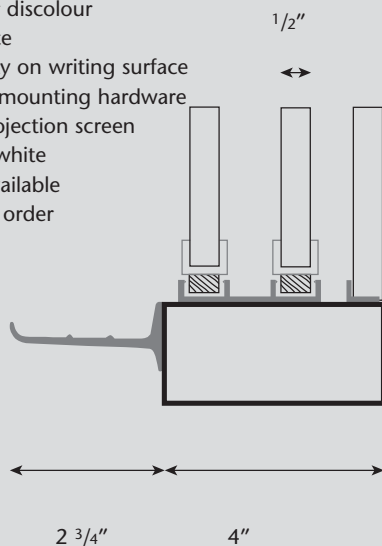
- A hard as glass porcelain enamel surface
- Attractive aluminum frame
- Dustless, ideal for computer rooms
- Excellent for colourful presentations
- Durable and strong surface that is easy to write on and easy to erase
- Will not stain or discolour
- Magnetic surface
- 50 year warranty on writing surface
- Complete with mounting hardware
- Useable as a projection screen
- Stock colour is white
- Custom sizes available through special order



HORIZONTAL OR VERTICAL SLIDING WHITEBOARDS

All sizes available through special order only

- Double your writing space
- Sliders are top suspended and glide easily on nylon roller bearing
- Rugged construction with top and side channels bolted together
- Finest quality available
- Dustless, ideal for computer rooms
- Excellent for colourful presentations
- Durable and strong surface that is easy to write on and easy to erase
- Will not stain or discolour
- Magnetic surface
- 50 year warranty on writing surface
- Complete with mounting hardware
- Useable as a projection screen
- Stock colour is white
- Custom sizes available through special order



sliding whiteboards



portable whiteboards

DELUXE PORTABLE WHITEBOARD & TACKBOARD

PMT64* 6' x 4' framed

* add colour codes

- 101** – Antique
- 102** – Champagne
- 301** – Cameo
- 302** – Lavender
- 303** – Mist Grey
- 509** – Amethyst
- 523** – Fountain Blue
- 577** – Mountain

- One side whiteboard with a tackboard on the other side
- Panel is mounted on heavy, rigid aluminum standards
- Upright posts are 1 1/4" square tubing with 1/8" thick wall
- Full length marker trough is 2 1/2" wide
- Unit moves easily on carpet casters
- Dustless, ideal for computer rooms
- Excellent for colourful presentations
- Durable and strong surface that is easy to write on and easy to erase
- Will not stain or discolour
- Magnetic surface
- 50 year warranty on writing surface
- Useable as a projection screen
- Stock colour is white for the whiteboards

- Attractive vinyl fabric
- Popular colour ranges
- Easy to clean
- Self-healing vinyl
- Laminated to 1/2" soft fibreboard
- Attractive aluminum frame
- Custom sizes & combinations available through special order



101
Antique



102
Champagne



301
Cameo



302
Lavender



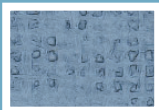
303
Mist Grey



509
Amethyst



523
Fountain Blue



577
Mountain

Colours may vary from swatches shown

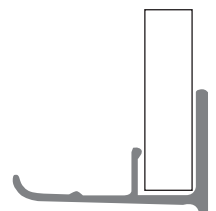
non-magnetic econo whiteboards

NON-MAGNETIC WHITEBOARDS

- NB3002330** 3' x 2' framed, complete with full-length marker trough
- NB3003430** 4' x 3' framed, complete with full-length marker trough
- NB3004430** 4' x 4' framed, complete with full-length marker trough
- NB3005430** 5' x 4' framed, complete with full-length marker trough
- NB3006430** 6' x 4' framed, complete with full-length marker trough
- NB3008430** 8' x 4' framed, complete with full-length marker trough
- NBB1230** 8' x 4' unframed

- Good writing surface
- Long lasting
- Economically priced
- Full length marker trough
- Attractive aluminum framing
- Complete with mounting hardware
- Custom sizes available through special order

1/4"



1 5/8"



whiteboard accessories

COLOUR DRY ERASE MARKERS

- 180669** Pack of 12 red markers
- 180670** Pack of 12 blue markers
- 180671** Pack of 12 black markers
- 180672** Pack of 12 green markers
- 180673** 12 assorted colour dry erase markers

- Writing goes on wet, dries instantly and is removed easily with a standard eraser
- Chisel point
- Packed as 12 per box (boxes cannot be broken)



MARKER ERASER COMBO

- 180680** 4 markers & foam eraser

- Combo contains 1 red, 1 black, 1 green and 1 blue marker along with 1 foam eraser



ERASER

- 180227** Standard Sewed Eraser

- Six soft gray felt erasing strips are sewed – lockstitched with two heavy-duty nylon threads to a 1/4" gray felt back
- Each erasing felt functions independently, removing and collecting chalk dust, or marker residue, reducing air pollution to the minimum
- Ideal for use on chalkboard or markerboard surface
- Provides dependable service and good cleaning qualities
- 5" x 2" x 1 1/4"



WHITEBOARD CLEANER

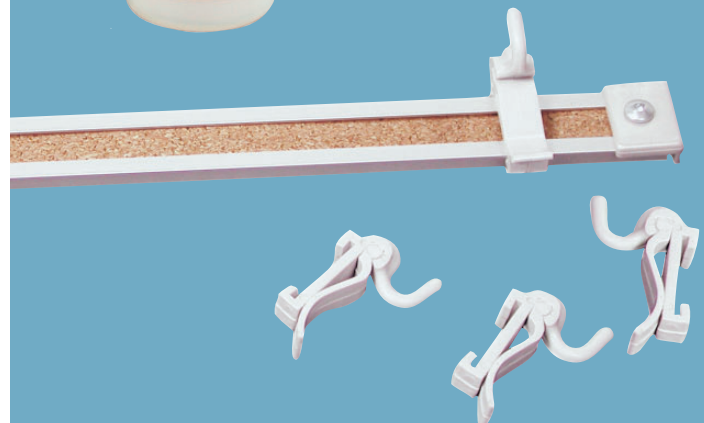
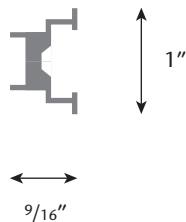
- 180683** 8 oz. pump spray bottle

- Cleans and restores LCS and MCL surfaces
- Convenient 8 oz. pump spray bottles
- Packed as 12 per box

MAPRAIL KITS

- 1822024** 2' kit
- 1822044** 4' kit
- 1822064** 6' kit
- 1822084** 8' kit
- 1822124** 12' kit

- Can be used on any of our 1/2" thick boards
- Kit comes complete with 4 hangers
- Full length cork insert
- Custom lengths available through special order





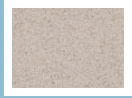
2186
Bristol Beige

2187
Bamboo

2162
Stone Wall



2067
Desert Sand



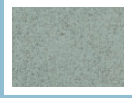
2182
Wild Mushroom



2185
Bali Blue



2166
Moca



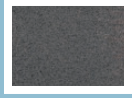
2203
Sage



2204
Smokey Grey



2201
Red Rust



2202
Charcoal Grey



2205
Midnight Blue

Colours may vary from swatches shown

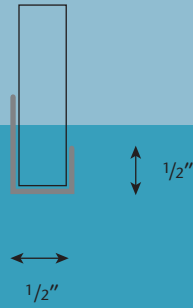
KROMMENIE BULLETIN BOARDS

- KB30044*** 4' x 4' framed
- KB30064*** 6' x 4' framed
- KB30084*** 8' x 4' framed

* add colour codes

- | | | |
|-----------------------------|-----------------------------|-----------------------------|
| 2186 – Bristol Beige | 2187 – Bamboo | 2162 – Stone Wall |
| 2067 – Desert Sand | 2182 – Wild Mushroom | 2185 – Bali Blue |
| 2166 – Moca | 2203 – Sage | 2204 – Smokey Grey |
| 2201 – Red Rust | 2202 – Charcoal Grey | 2205 – Midnight Blue |

- Uni-coloured linoleum natural homogeneous resilient tackable surface material
- Popular colour ranges
- Easy to clean
- Self-healing vinyl
- Attractive aluminum frame
- Complete with mounting hardware
- Custom sizes available through special order



Tackboards

LOFLAME® VINYL TACKBOARD

- TB30022*** 2' x 2' framed
- TB30044*** 4' x 4' framed
- TB30064*** 6' x 4' framed
- TB30084*** 8' x 4' framed
- TBB48*** 8' x 4' unframed

* add colour codes

- 101** – Antique
- 102** – Champagne
- 301** – Cameo
- 302** – Lavender
- 303** – Mist Grey
- 509** – Amethyst
- 523** – Fountain Blue
- 577** – Mountain



101
Antique



102
Champagne



301
Cameo



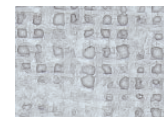
302
Lavender



303
Mist Grey



509
Amethyst



523
Fountain Blue



577
Mountain

Colours may vary from swatches shown

- Attractive vinyl fabric
- Popular colour ranges
- Easy to clean
- Self-healing vinyl
- Laminated to 1/2" soft fibreboard
- Attractive aluminum frame
- Complete with mounting hardware
- Custom sizes available through special order



Corkboards

FINE GRAIN CORKBOARDS

CT30022 2' x 2' framed

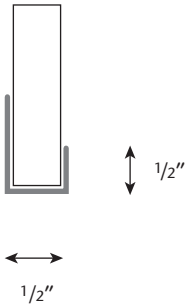
CT30044 4' x 4' framed

CT30064 6' x 4' framed

CT30084 8' x 4' framed

CTB716 8' x 4' unframed

- Practical tackboard
- Excellent tackability
- Easy to clean
- Self-heal cork
- 0.8 mm cork laminated to 1/2" fibreboard
- Attractive Aluminum frame
- Complete with mounting hardware
- Custom sizes available through special order



Cork by the roll

FINE GRAIN CORK ROLLS

18065425 4' x 25' roll 5 mm cork

18065450 4' x 50' roll 5 mm cork

180654118 4' x 118' roll 5 mm cork

- Practical tackboard
- Excellent tackability
- Easy to clean
- Self-heal cork
- Ideal for custom jobs
- Can be laminated to radius surfaces



Chalkboard green

ALLIANCE PORCELAIN ENAMEL ON STEEL SURFACE

- CB30022** 2' x 2' framed green chalkboard
- CB30044** 4' x 4' framed green chalkboard
- CB30064** 6' x 4' framed green chalkboard
- CB30084** 8' x 4' framed green chalkboard
- CBB12** 8' x 4' unframed green chalkboard

- Easy to write on
- Easy to erase
- Durable and resistant to scratches and dents
- Magnetic surface
- Full length chalk rail
- Aluminum trim
- Complete with mounting hardware
- Custom size available through special order



Chalkboard accessories

DUSTLESS WHITE CHALK

180144 12 sticks per box; 12 boxes per carton

- 3/8" diameter, 3 1/4" long



ERASER

180227 Standard Sewed Eraser

- Six soft gray felt erasing strips are sewed – lockstitched with two heavy-duty nylon threads to a 1/4" gray felt back
- Each erasing felt functions independently, removing and collecting chalk dust, or marker residue, reducing air pollution to the minimum
- Ideal for use on chalkboard or markerboard surface
- Provides dependable service and good cleaning qualities
- 5" x 2" x 1 1/4"



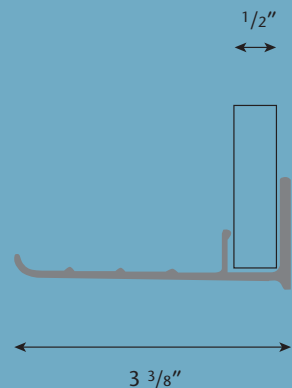
Chalkboard black

ALLIANCE PORCELAIN ENAMEL ON STEEL SURFACE



- CB3002290** 2' x 2' framed black chalkboard
- CB3004490** 4' x 4' framed black chalkboard
- CB3006490** 6' x 4' framed black chalkboard
- CB3008490** 8' x 4' framed black chalkboard
- CBB1290** 8' x 4' unframed black chalkboard

- Easy to write on
- Easy to erase
- Durable and resistant to scratches and dents
- Magnetic surface
- Full length chalk rail
- Aluminum trim
- Custom size available through special order



Directory boards



FREESTANDING DIRECTORY

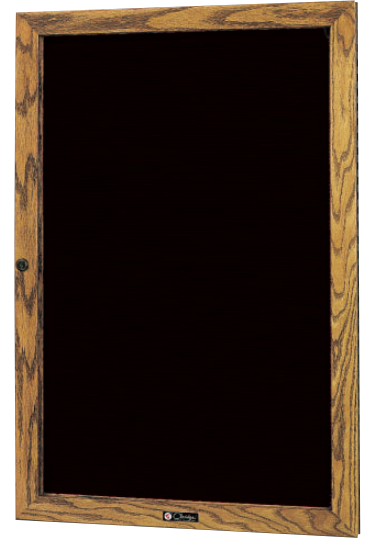
FD3636 36" x 36"
FD4836 48" x 36"

- FD3636 has one glass door
- FD4836 has two glass doors
- Overall height 72"
- Frames are oak with a natural finish
- Cabinets have piano hinges and are equipped with locks
- Black felt panel
- Other sizes and finishes available through special order

WOOD FRAMED GLASS DOOR DIRECTORY

GD1824 18" x 24"
GD4836 48" x 36"
GD6048 60" x 48"

- Glass doors with continuous piano hinge and flat key tumbler locks
- Outside depth is 1 5/8"; inside 3/8"
- Concealed hangers
- Panel size is 36" high x 24" wide
- Frames are oak with a natural finish
- Black felt panel
- Other sizes and finishes available through special order



FREESTANDING DIRECTORY

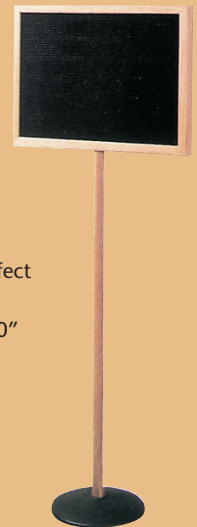
FD2030 20" x 30"

- Handsome directory cabinet with lift up glass door
- Door is fitted with piano hinge at top and flat key tumbler lock at bottom
- Overall height is 56"; distance from floor to cabinet is 36"
- Cabinet, framed in satin anodized aluminum, is 20" high x 30" wide
- Legs are 2" steel finished in black baked-on enamel
- Black felt panel
- Other sizes and finishes available through special order

OPEN FACE PEDESTAL DIRECTORY

PD2015 15" x 20"

- Sturdily built free-standing directory is perfect for lobbies and entranceways
- Overall height is 53"; panel size is 15" x 20"
- Frames are oak with a natural finish
- Black felt panel
- Other sizes and finishes available through special order



Directory boards



DOUBLE-SIDED OPEN FACE DIRECTORY

DD2436 24" x 36"

- Aluminum framed has two identical sides
- Satin anodized finish
- Floor base and legs are steel finish in black
- Overall height is 72"; width is 26"; distance from floor to panel is 36"
- Panel size is 36" high x 24" wide
- Other sizes and finishes available through special order

Bulletin boards

ECONOMY BULLETIN BOARD AND DIRECTORY CABINET

EB2418 24" x 18"

EB3624 36" x 24"

EB3630 36" x 30"

EB4230 42" x 30"

- An economy bulletin board/directory with style and quality
- Satin anodized aluminum frame
- Housing is 2" deep; unit has a 1" face and a 1 1/4" inside depth
- Single hinged door with 1/8" glass, lock and key
- Bulletin boards cabinets have 1/2" Tan Nucork back panel
- Unit is mounted by screwing through the back panel trim into the wall (1 1/2" screws furnished)
- Other sizes and finishes available through special order



Directory lettering

STORAGE BOX FILLED WITH 100 WHITE ROMAN STYLE LETTERS AND NUMERALS



180383 3/8" letters in box of 100

180384 1/2" letters in box of 100

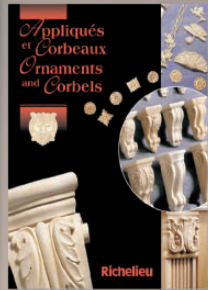
180385 3/4" letters in box of 100

180386 1" letters in box of 100

180387 1 1/2" letters in box of 100

180388 2" letters in box of 100

- Assortment has the following:
6 ea. E; 5 ea. A, O, S; 4 ea. I, R, T; 3 ea. B, C, D, F, G, H, L, M, N, P, U, W; 2 ea. K, V, Y; 1 ea. J, Q, X, Z; 2 ea. 0, 1, 2, 3, 4, 5, 6, 7, 8, 9 and 1 ampersand
- Storage boxes are durable fibreboard with cardboard compartments



Richelieu

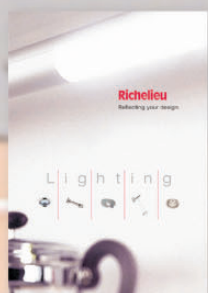
your **specialist** in
furniture, woodworking and
kitchen cabinet **hardware!**



We help transform your projects into successes. With more than 30,000 products, we innovate constantly to offer the latest solutions in furniture, woodworking and kitchen cabinet hardware.



We welcome all our customers to surf at your leisure through our virtual catalogues at www.richelieu.com. You'll find the products and technical specifications you are interested in! We invite you to print your product specifications or product lines to simplify purchasing your supplies from the many kitchen retailers, hardware retailers and renovation superstores that carry kitchen products.



Can't find your products? Contact us and we'll be pleased to assist you. Locations and phone numbers are listed on the back page of this catalogue.



CANADA

Moncton

300 Baig Blvd.
Moncton, N.B.
Canada E1E 1C8

Québec

4500, boulevard Hamel
Québec, (Québec)
Canada G1P 2J9

Montréal

7900, boul. Henri-Bourassa O.
Saint-Laurent (Québec)
Canada H4S 1V4

Laval

4855, autoroute 440 Ouest
Laval (Québec)
Canada H7P 5P9

Ottawa

2772 Lancaster Road
Ottawa, Ontario
Canada K1B 4S4

Mississauga

6420 Viscount Road
Ottawa, Ontario
Canada L4V 1H3

Winnipeg

1372 Mountain Avenue
Winnipeg, Manitoba
Canada R2X 3A3

Regina

185 Leonard Street N.
Regina, Saskatchewan
Canada S4N 5X5

Saskatoon

#5 - 1730 Quebec Avenue
Saskatoon, Saskatchewan
Canada S7K 1V9

Edmonton

10442 - 169 Street
Edmonton, Alberta
Canada T5P 3X6

Calgary

5211 - 52nd Street S.E.
Calgary, Alberta
Canada T2C 4T2

Kelowna

750 McCurdy Road, #102
Kelowna, British Columbia
Canada V1X 2P7

Vancouver

150 - 12851 Rowan Place
Richmond, British Columbia
Canada V6V 2K5

Victoria

#8 - 616 Hillside Avenue
Victoria, British Columbia
Canada V8T 1Z2

UNITED STATES

Detroit

650 East Mandoline Road
Madison Heights
Michigan 48071 USA
Tel.: (248) 585-9441
1 800 619-5446
Fax: (248) 585-9443

Richelieu

1 800 361-6000
www.richelieu.com
www.panelproducts.com

f2b, first edition Printed in Canada 4-2003 \$3.00

