

## Rev-A-Shelf jewelry Drawer with Slides

**Product #** CJD2414

### DESCRIPTION

#### Sliding drawer for jewelry storage management

Keep your jewelry organized and in meticulous condition with the CJD series jewelry drawer from Rev-A-Shelf. The CJD2414 system is easily installed with system holes and features full-extension ball bearing slides, and drawer head mounting capability. Used in coordination with the CJDIS (Jewelry) and CJDIN (Necklace) inserts, customizing and care have never been easier.

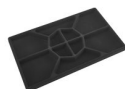
### ADVANTAGES AND BENEFITS

- The CJD-2414 system is easily installed with system holes - Features 100 lb (45 kg) full-extension ball bearing slides - Used in coordination with the CJD-IS (Jewelry) and CJD-IN (Necklace) inserts, customizing and care have never been easier - Rev-A-Shelf limited lifetime warranty

## REQUIRED PRODUCTS

Requires ONE of the following products

**Sales unit**



**Rev-A-Shelf jewelry Drawer Standard Insert**  
Product # CJD2415

OR



**Rev-A-Shelf jewelry Drawer Necklace Insert**  
Product # CJD241N

## TECHNICAL SPECIFICATIONS

<b>Product #</b>	CJD2414
<b>Application</b>	Jewels
<b>Product Type</b>	Drawers and Dividers
<b>Collection</b>	Rev-a-Shelf
<b>Product Dimensions - Width</b>	24 in
<b>Product Dimensions - Depth</b>	14 in
<b>Product Dimensions - Height</b>	1 7/8 in
<b>Finish</b>	Black
<b>Material</b>	Wood
<b>Interior Dimensions Required - Width</b>	Min. 24 in
<b>Interior Dimensions Required - Depth</b>	Min. 14 in
<b>Interior Dimensions- Height Requirements</b>	Min. 1 7/8 in
<b>Soft-close</b>	No
<b>Weight Capacity</b>	100 lb
<b>Type of Cabinet</b>	Closet

## INCLUDED PRODUCT(S)

- Includes wood drawer with mounting hardware - Slide type: 100 lb (45 kg) full-extension ball bearing

## IMPORTANT INFORMATION

- Inserts not included.

## PRODUCT PHOTOS

