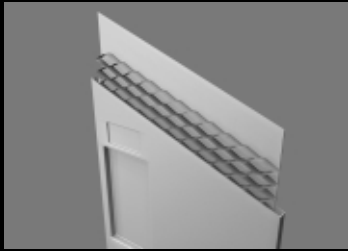


# LOCKERS



Door  
Construction



Pull Detail



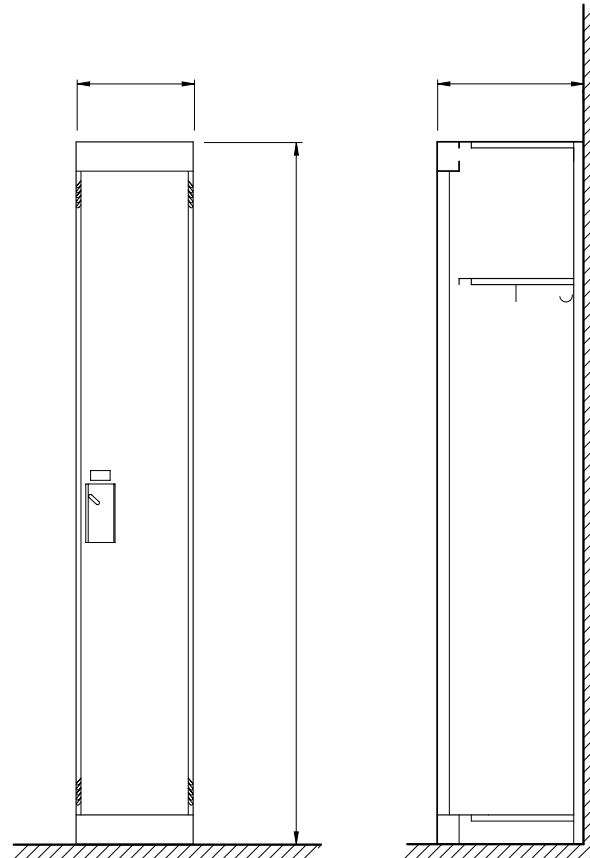
Ventilation

**E m p e r o r**  
*corridor lockers*

**hadrian**  
toilet partitions and lockers

www.hadrian-inc.com

## Technical Data



### Locker Doors

- Standard Doors  
20 gauge outer panel /  
24 gauge inner panel
- Heavy Duty Doors  
16 gauge outer panel /  
24 gauge inner panel

1" (25mm) cell honeycomb core

### Lock Preparation

- Padlock Preparation
- Built-in Combination /  
Cylinder Keylock Preparation
- Positive Latch

### Locker Parts

Back Panel	24ga
Side Panel	24ga
Top, Bottom & Shelf	22ga
Door Strike (Frame)	16ga
Hasp	11ga
Hinge (Continuous)	18ga

Note: Locker growth 1/32"  
(0.8mm) per locker

**Emperor - Single Tier**