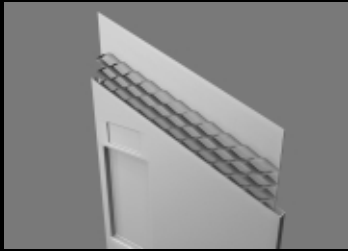


LOCKERS



Door Construction



Pull Detail



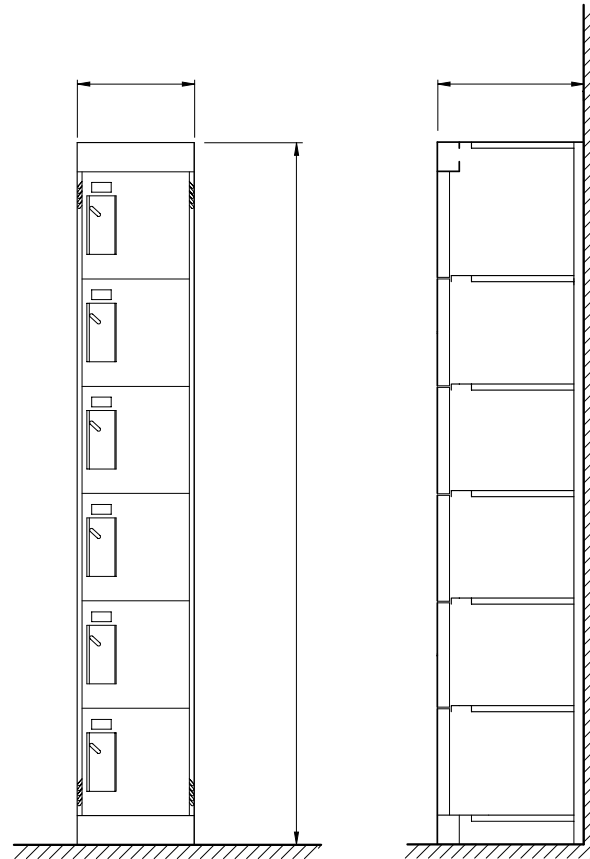
Ventilation

E m p e r o r
corridor lockers

hadrian
toilet partitions and lockers

www.hadrian-inc.com

Technical Data



Locker Doors

- Standard Doors
20 gauge outer panel /
24 gauge inner panel

1" (25mm) cell honeycomb core

Lock Preparation

- Padlock Preparation
- Built-in Combination /
Cylinder Keylock Preparation

Locker Parts

Back Panel	24ga
Side Panel	24ga
Top, Bottom & Shelf	22ga
Door Strike (Frame)	16ga
Hasp	11ga
Hinge (Continuous)	18ga

Note: Locker growth 1/32"
(0.8mm) per locker

Emperor - Six Tier