

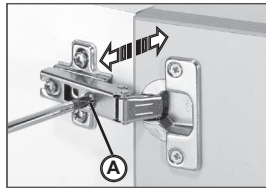


"M Click" is the latest Series of modular Click-On hinges. Designed with the latest computer technology, coupled with 50 years of experience in hinge production. The "M Click" series offers a unique combination of strength, reliability and fast, easy, tool-less assembly. The "M Click" range of hinges and plates is comprehensive and covers all the requirements of a world-wide market. "M Click" hinges is now also available in OPTIMA version with an in and out cam adjustment.



Reliability, simplicity of use and a wide range of variations and applications are the characteristics behind this success. The result of 50 years experience in hinge technology, the "M Slide-On" Series uses the slide-on fixing system allowing fast and easy assembly combined with strength and accuracy of adjustment. Series "M Slide-On" offers 35mm cups and all opening angles (90°, 110°, 175°). Every variation in terms of specification, drilling patterns, and mounting plate configurations are available in order to satisfy the demands of a world-wide customer base.

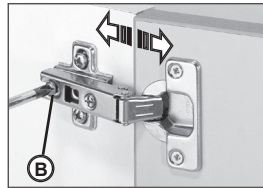
ADJUSTMENT SYSTEM



Independent side adjustment

Acting on the "A" screw, you change the overlay of the door.

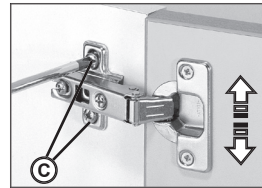
- 2mm / + 5mm
(-2mm / +6mm for Optima)



Front adjustment

Acting on screw "B" you adjust the gap between side gable and door.

1mm in and 2,5mm out
(+/- 1,5mm for Optima)

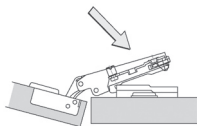


Vertical adjustment

Acting on screw "C", you adjust the door vertically.

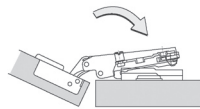
+ / - 1,75mm
(+/- 1,5mm for Optima)

M CLICK MOUNTING SYSTEM



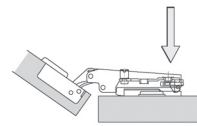
1

Place the front part of the hinge on the front side of the plate.



2

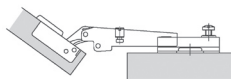
Rotate the arm of the hinge.



3

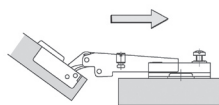
Press down the rear part of the hinge to click on.

M SLIDE-ON MOUNTING SYSTEM



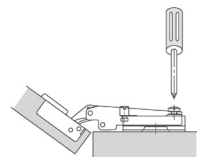
1

Place the rear part of the hinge on the front side of the mounting plate.



2

Let the hinge slide on the plate including the pin and until it stops.



3

Tighten the connecting screw.

Table to find the number of hinges to use according to the door height:

