

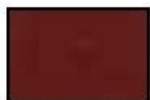


## Tone Finish Toners

Finely ground, non-fading pigment based toners for spot repairs and general color blending.



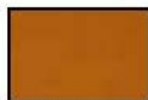
**M101-0143**  
RAW UMBER



**M101-0160**  
FIDDLETONE CHERRY



**M101-0202**  
WHITE WASH



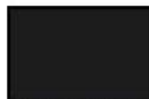
**M101-0205**  
MEDIUM  
WALNUT



**M101-0206**  
LIGHT WALNUT



**M101-0207**  
MEDIUM BROWN/  
AMERICAN WALNUT



**M101-0209**  
EXTRA DARK  
WALNUT



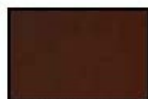
**M101-0210**  
NEW MAPLE  
REDDISH



**M101-0218**  
LIGHT RED  
MAHOGANY



**M101-0222**  
BLONDE



**M101-0227**  
DARK RED  
MAHOGANY



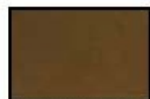
**M101-0229**  
BROWN  
MAHOGANY



**M101-0234**  
MEDIUM  
DARK WALNUT



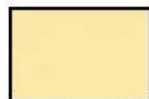
**M101-0240**  
COLONIAL  
MAPLE



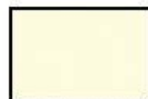
**M101-0249**  
PERFECT  
BROWN



**M101-0300**  
FONTANA-NEW



**M101-0303**  
BEIGETONE/  
PICKLE



**M101-0323**  
CHAMPAGNE  
FROST



**M101-0324**  
PICKLE FROST



**M101-0325**  
LIGHT PINE



**M101-0326**  
AMBER



**M101-0353**  
DARK VAN  
DYKE BROWN



**M101-0356**  
CHARTER OAK



**M101-0357**  
MEDIUM BROWN  
MAPLE



**M101-0385**  
CORDOVAN  
MAHOGANY



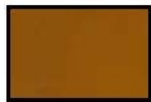
**M101-0386**  
MEDIUM RED  
SHADING MAHOGANY



**M101-0387**  
MEDIUM BROWN  
MAHOGANY

# Aerosols

**Tone Finish Toners** *(continued)* Finely ground, non-fading pigment based toners for spot repairs and general color blending.



**M101-0388**  
FRUITWOOD  
CHERRY



**M101-0408**  
CHERRY



**M101-0411**  
NUTMEG



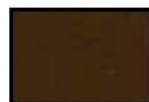
**M101-0504**  
WINTERSET PINE



**M101-0505**  
PINE RANCH



**M101-1106**  
WARM TAN



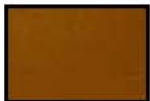
**M101-1372**  
ROUGE #890120



**M101-1435**  
BURNT UMBER



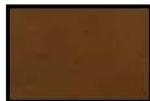
**M101-1478**  
VAN DYKE  
BROWN



**M101-1522**  
STATESMAN OAK



**M101-7020**  
DARK OAK/  
TAVERN PINE



**M101-8359**  
BROWN CHERRY