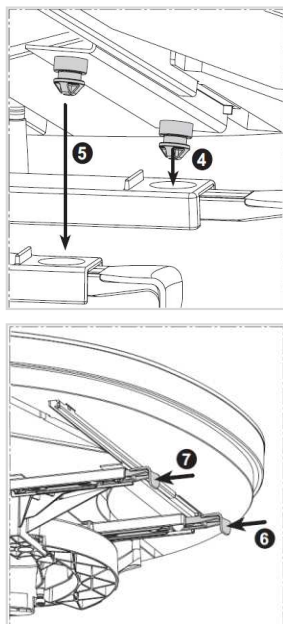




Power Slide with Pro-Arc shelves Innovation comes from the inside ...

Power slide represents the latest innovation in terms of corner cabinet solution. Symbol of a perfect balance between design and functionality, the system consists of attractive countered trays that slide-out independently in a smooth fluid movement.

Trays are equipped with full-extension slides that are mounted centrally and under the shelf. The straight sliding direction allows total access and makes the system suitable for installation next to dishwasher or drawers, the trays will never bump onto the drawers or cabinet door



➤ Advantages

- ✓ **Ergonomic design** making the best use of the space, the integrated contour prevents smaller items from slipping through
- ✓ **Ergonomic sliding movement:** adjacent cabinet remains fully accessible as the trays slides parallel to the drawers
- ✓ **Mounted centrally:** less restriction in terms of space, adapted for face frame applications, the mechanism is discreet and not visible
- ✓ **Easy mounting & cleaning:** the trays can be easily detached from the fitting and installed without any tool
- ✓ **Each tray can be pull-out independently** for more ergonomics
- ✓ **Spider-web structure** in the bottom of the tray provides a considerable lightness and good rigidity for high load capacity (up to 20 kg per tray – 44 lbs)
- ✓ **Anti-slip coating** integrated in the Shelf available on the grey finish only

Technical Informations

450mm Version

int. Width: min. 862 mm (34")
int.:Depth min. 480 mm (18-7/8")
int. Height: min. 665 mm (26-3/16")
Opening Width: min. 400 mm (15-3/4")

Code	Description
9591100	Power Slide mechanism including 2 trays, left opening, grey
9591910	Power Slide mechanism including 2 trays, left opening, dark grey
9592100	Power Slide mechanism including 2 trays, right opening, grey
9592910	Power Slide mechanism including 2 trays, right opening, dark grey

600mm Version

int. Width: min. 1162 mm (45 3/4")
int. Depth: min. 490 mm (19-1/4")
Int. Height: min. 620 mm (24-3/8")
Opening Width: min. 562 mm (22-1/8")

Code	Description
9595100	Power Slide mechanism including 2 trays, left opening, grey
9595910	Power Slide mechanism including 2 trays, left opening, dark grey
9596100	Power Slide mechanism including 2 trays, right opening, grey
9596910	Power Slide mechanism including 2 trays, right opening, dark grey