

2002 Pocket Door Strike / Pull (#2002CPDS)

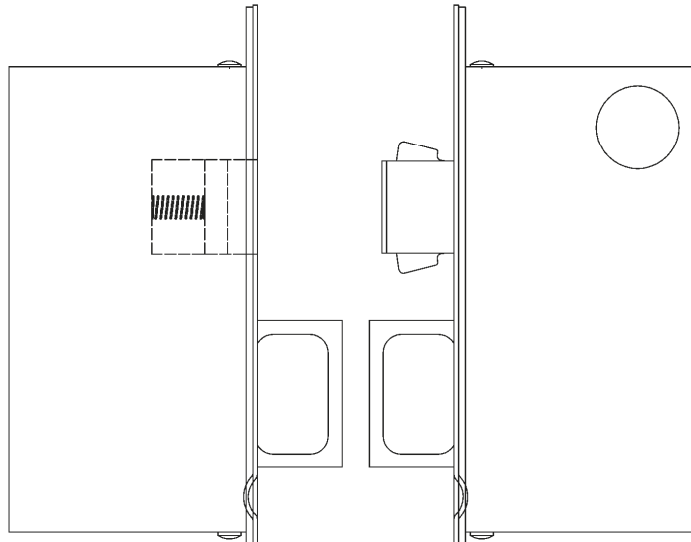
For use in double door applications, opposing our #2002CPDL pocket door lock/pull

SUGGESTED TRIM FOR
INSIDE AND OUTSIDE:

A2002B or S2002B

SUGGESTED
TRIM:

Please refer to
the 2002 Pocket
Door Lock / Pull
(#2002CPDL)



INACTIVE DOOR
#2002CPDS

ACTIVE DOOR
#2002CPDL

