

Crémone Bolt

Tools Required

Pencil, Level, Drill, Saw

Minimum Door Thickness

1-1/4"

Installation

1. Using a level, place handle at desired position on door. Mark and drill mounting holes.
2. Mark the centre point between the top and bottom mounting holes.
3. Determine top and bottom rod length and trim accordingly. Rod length is equal to the distance from the handle's centre mark to the top/bottom edge of the door, minus 1-1/4" (see Fig. 1).
4. Install rods onto handle by placing the rod holes onto corresponding handle pins on the backside of the handle (see Fig. 2). Install entire unit onto the door using previously drilled holes.
5. Using a level to ensure rods are straight, install end guides on the top and bottom of door.
6. Install additional long and short guides as desired.
7. Close door or window and mark the locations for holes on the door frame. Drill holes 1/2" deep for the bolt rods.

Fig. 1

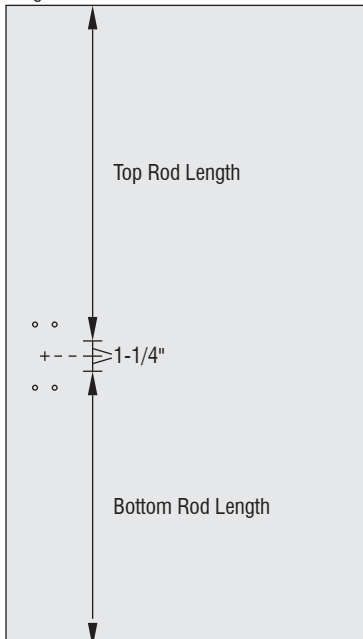
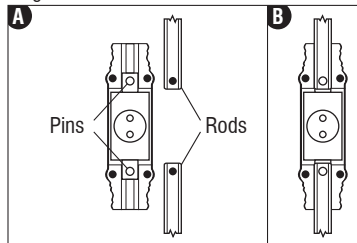


Fig. 2



Typical Installation

