

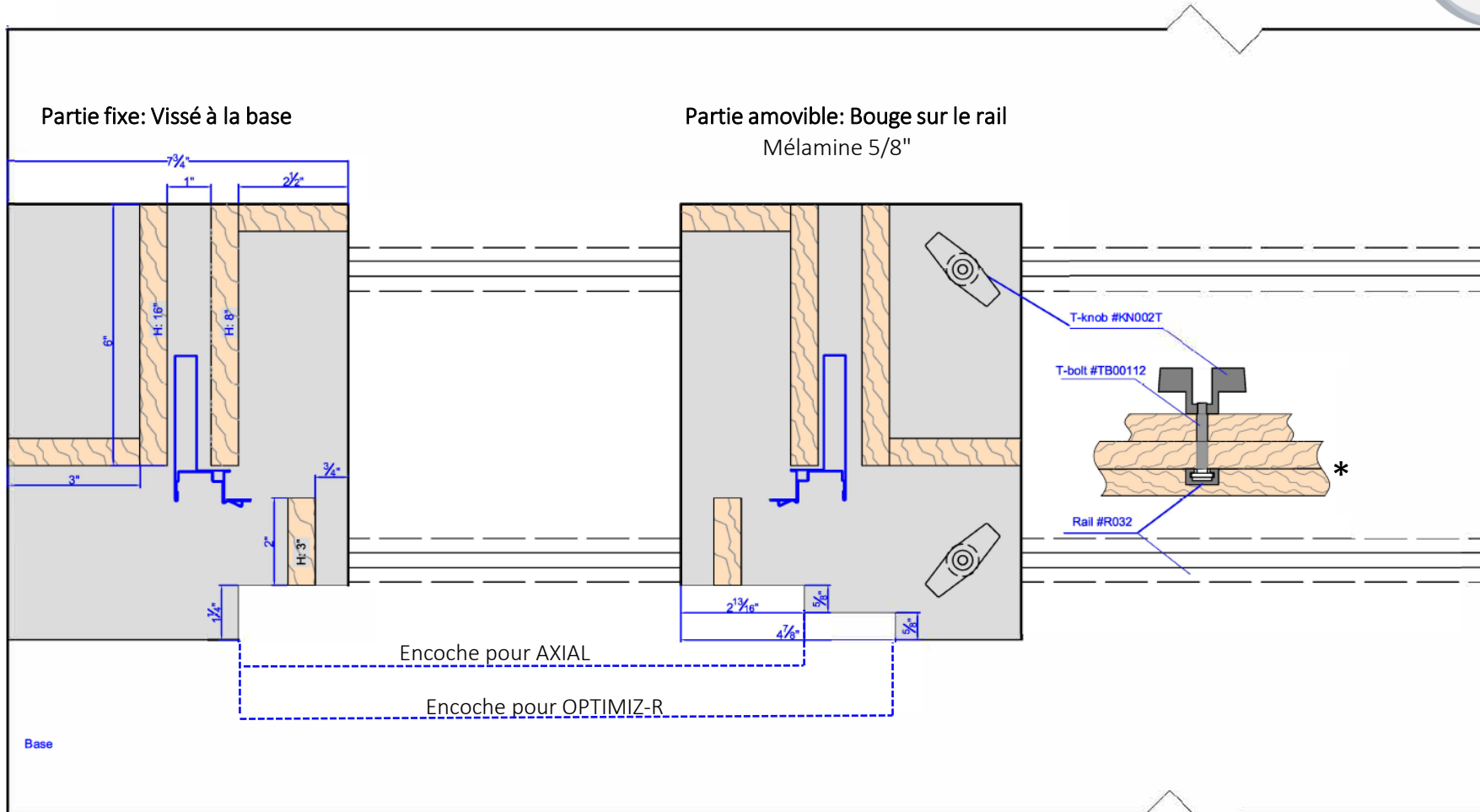


# GABARIT D'ASSEMBLAGE






**SIMPLE ET RAPIDE**

Profondeur de la base : 18"



Largeur de la base : Min. 54" pour un cabinet de 48"

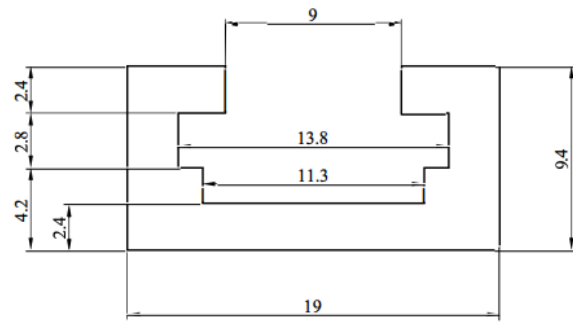
Ce dont vous avez besoin :

- Feuilles de mélamine 5/8"
- 2x Boulons en T #TB00112 
- 2x Boutons d'insertion # KN002T 
- 2x Rails T-Track #R032 

**\*Pour la base :**  
2 épaisseurs de mélamine 5/8" pour installer les rails

# RAIL T-TRACK

## #R032

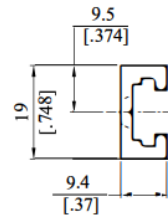


SCALE 4:1

EXPOSED SURFACE

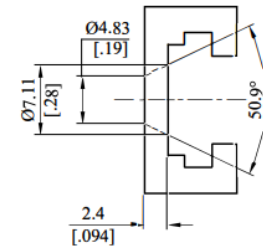
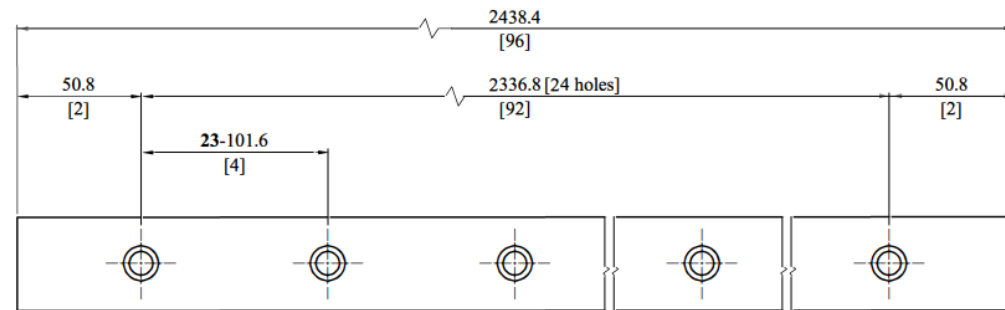
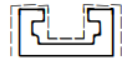


SCALE 1:1



Alu Profile's  
Code: QL032  
Alloy: 6063T5

EXPOSED SURFACE

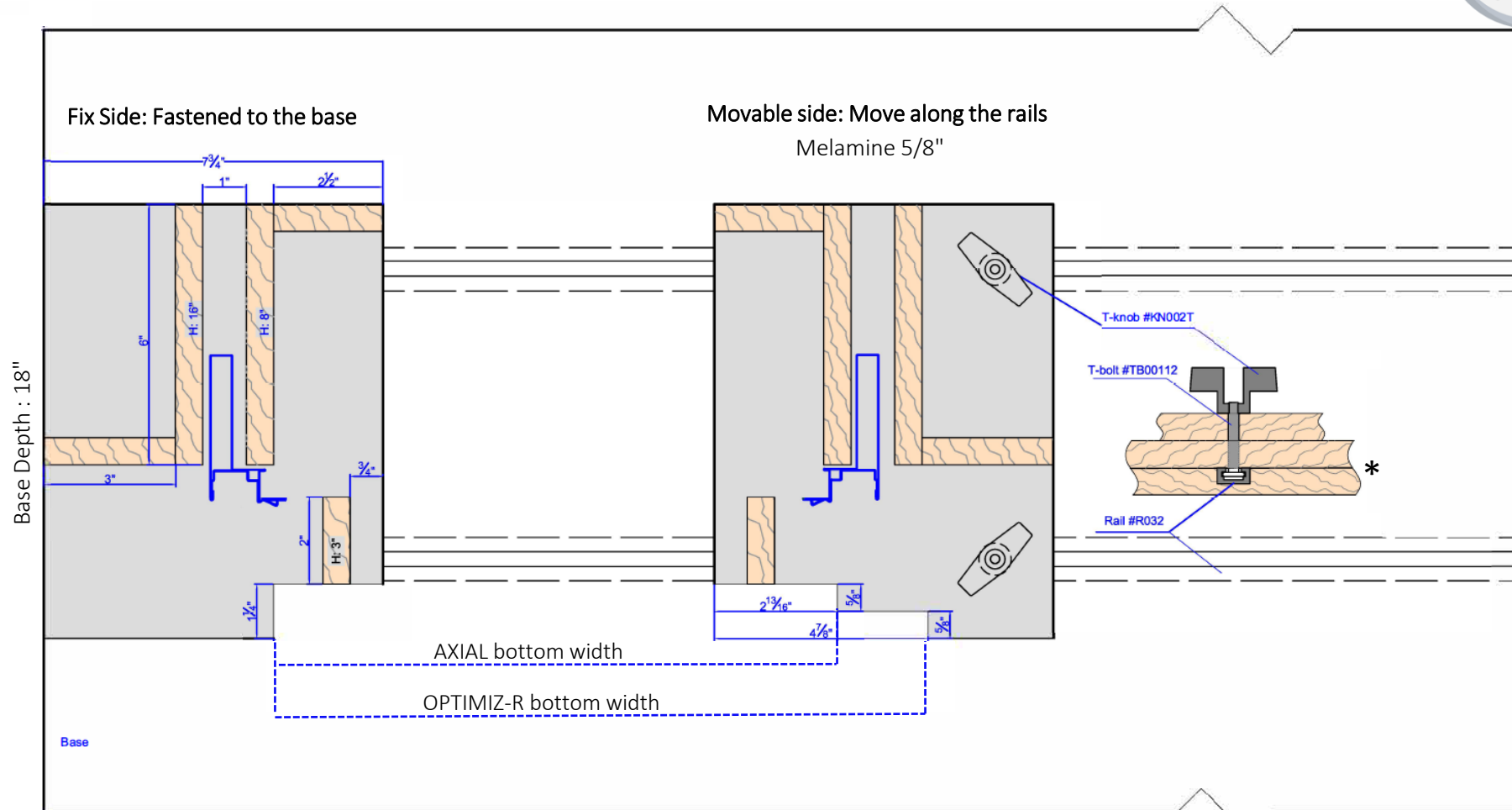




# ASSEMBLY JIG



QUICK AND SIMPLE



Base Width: Min. 54" for a 48" cabinet

## What you need:

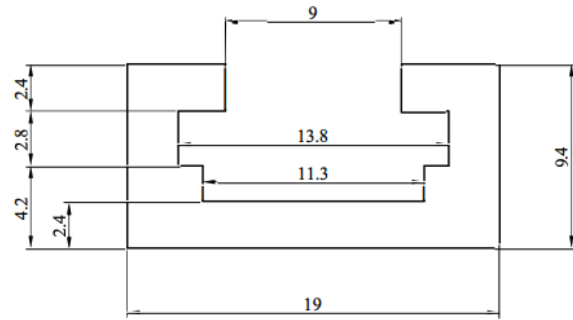
- 5/8" Melamine sheets
- 2x T-bolts #TB00112
- 2x T-knobs # KN002T
- 2x T-Track Rails #R032



**\*For the base:**  
2 layers of 5/8" melamine to install the rails.

# T-TRACK RAIL

## #R032

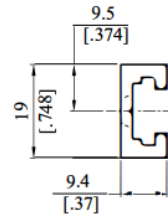


SCALE 4:1

EXPOSED SURFACE



SCALE 1:1



Alu Profile's  
Code: QL032  
Alloy: 6063T5

EXPOSED SURFACE

