

Pocket Door Pull - Privacy - Rectangular

Product # 1701ANPSBC

Color/Finish Antique Nickel

Door Thickness 1 1/4 to 1 1/2 in

Packaging format Bag

DESCRIPTION

Compatible with left-hand and right-hand doors.

Suitable for use on most types of doors, this pocket door pull is available in a variety of finishes to suit any decor. A unique door pull to add that finishing touch to any room. Easy to install.

ADVANTAGES AND BENEFITS

Compatible with left-hand and right-hand doors. Designed to be installed on most types of doors, this pocket door pull is available in a variety of finishes and is sure to suit any design!

TECHNICAL SPECIFICATIONS

Product #	1701ANPSBC
Door Type	Wood
Usage	Pocket Door
Depth - Overall Dimensions	1 1/2 in
Screw/Nail	Included
Fixing Technique	Flush
Function	Privacy
Height	3 7/32 in*
Width	2 9/32 in*
Length	3 7/32 in*
Material	Steel

Disclaimer

Measures shown with an asterisk (*) have been converted as per your preference. These are not the official measures. To view the measures specified by the manufacturer, [click here](#).

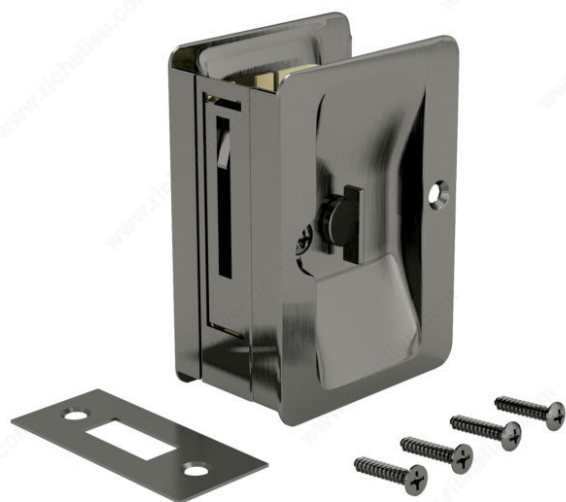
APPLICATION

For residential use only.

INCLUDED PRODUCT(S)

Mounting hardware included.

PRODUCT PHOTOS





Privacy model: For any space where you need privacy

Modèle Intimité : pour tout espace où vous avez besoin d'intimité



