



Snap front hooking system with fin for lower rail. PS40.1/PS40.2

Product # 18910AI93

DESCRIPTION

Used to clip the bottom rail to the cabinet. A groove on the top of the cabinet is required. Attaches with screws, not included.

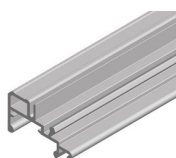
ADVANTAGES AND BENEFITS

Machining a 10 mm depth by 3.5 mm width groove allows quick assembly.

REQUIRED PRODUCTS

Requires ONE of the following products

Sales unit



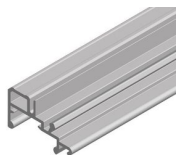
Lower rail. Ps40.1/PS40.2

Product # 1894073382410

Overall Length: 96 1/2 in*

Length of 2.45
linear meter

OR



Lower rail. Ps40.1/PS40.2

Product # 1894073393610

Overall Length: 11 ft 9 in*

Length of 3.6
linear meter

TECHNICAL SPECIFICATIONS

Product #	18910AI93
Manufacturing Material	Plastic
Product type	Mounting Accessories
Finish	Black
Brand	CINETTO

Disclaimer

Measures shown with an asterisk (*) have been converted as per your preference. These are not the official measures. To view the measures specified by the manufacturer, [click here](#).

APPLICATION

PS40.1 PS40.2

IMPORTANT INFORMATION

Pictures provided for visual reference only: actual product may vary. All required hardware should be ordered and obtained prior before to initiating fabrication or installation work. Please verify that the parts and quantity listed in your order are correct before proceeding to checkout. Always use instructions provided by the manufacturer, as included with the product. Manufacturer reserves the right to amend, modify or otherwise supplement any previously issued product and/or technical information, as deemed required from time to time, without prior notice. The documentation, drawings and instructions on this page apply to the system described on this page only. Richelieu expressly declines all responsibility for any design or construction that combines this system with systems from this same manufacturer or systems from other manufacturers. Installation of the Product shall be executed by qualified individuals only, always ensuring that each product is securely installed using proper fixation methods, as appropriate for each applicable substratum. We trust that anyone installing these products has the required skills, knowledge and experience. Richelieu expressly disclaims any liabilities for results obtained through improper use or installation. Always remove debris / dust / residues (sawdust and / or aluminum) from the rails using a dry cloth before installing carriages bearing. Never spray lubricant.

DISCLAIMER

By accessing or referring to this document, or by using any of Richelieu's Website, you accept all applicable terms as they apply from time to time. This legal disclaimer is in no way limited or altered by any other terms or conditions. Richelieu may change said terms at its discretion and without prior notice. A version of the most current terms will always be available on Richelieu's Website. The preceding information and technical documentation, information or recommendation issued by Richelieu verbally or in writing is believed to be accurate and is given in good faith, but no representation of warranty as to its completeness or accuracy is made. Suggestions for uses or applications are only opinions. Users are responsible for determining the suitability of these products for their own particular purpose. No representation of warranty, expressed or implied, is made with respect to information or products including, without limitation, warranties or merchantability, fitness for particular purpose, non-infringement of any third party patent or other intellectual property rights including, without limit, copyright, trademark and designs. Any trademarks identified herein are trademarks of the Richelieu group of companies. Richelieu assumes no risk and shall not be subject to any liability for damages or loss resulting from the specific use or application made of the product. Richelieu's liability for any claim, whether based on breach of contract, negligence, infringement of any rights of any party relating to the product shall not exceed the price paid for said products. In no event shall Richelieu be liable for any special, incidental, or consequential damages (including loss of use, loss of profit, and claims of third parties) however caused, whether by the negligence of Richelieu or otherwise. Products returned for warranty purposes shall be subject to Richelieu's then applicable Return Policy.

PRODUCT PHOTOS

