



Single Adjustable Galvanized Steel Box Rail Bracket - Wall Mount

Product # 24648081GAV

DESCRIPTION

To hang box track rails to the side of the building

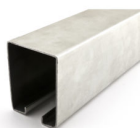
Adjustable wall mount bracket for box track rails. Ideal for use on metal-sided or corrugated siding. Simple installation.

ADVANTAGES AND BENEFITS

Easy to install

REQUIRED PRODUCTS

Requires the following products



Heavy-Duty Galvanized Steel Box Rail

TECHNICAL SPECIFICATIONS

Product #	24648081GAV
Product type	Track, Single Wall Bracket, Box Track
Track Mounting	Wall Mount
Overall Length	7 7/32 in*
Finish	Galvanized
Width	2 1/4 in*
Application	Barn Door
Screw/Nail Included	Yes
Manufacturing Material	Steel
Overall Height	3 5/16 in*

Disclaimer

Measures shown with an asterisk (*) have been converted as per your preference. These are not the official measures. To view the measures specified by the manufacturer, [click here](#).

IMPORTANT INFORMATION

Note: Picture for visual reference only: actual product may vary from that shown in photo. Be sure to order hardware before beginning fabrication or installation work. Always use the instructions inside the packaging provided by the manufacturer, as the manufacturer reserves the right to make technical changes or modify information without prior notice. All technical drawings and documents contain examples of the assembly of different suppliers' hardware. The customer cannot base any claims on the use of these documents. No responsibility is assumed for design details relating to a particular construction project. At all times, execution and installation must be undertaken by qualified persons. Never exceed the maximum weight or the maximum dimensions recommended by the manufacturer. Always be sure to install the product correctly using the right fasteners for your materials. Never use any spray lubricant on these products.

APPLICATION

Used for the heavy Duty Galvanized Steel Box Rail

DISCLAIMER

The preceding information, as well as any technical recommendations given in writing, verbally or based on tests, is provided to the best of our knowledge. However, they are non-binding recommendations only and do not affect your responsibility to determine the correctness of given recommendations and suitability of the product for your particular purposes. The application, use or processing of our products as well as the production of products based on our technical recommendations are beyond our control and therefore fall exclusively in your area of responsibility. Sales of our products are subject to our most recent General Sales and Delivery Conditions. Please note that Richelieu will not accept any returns or claims for unpackaged products.

PRODUCT PHOTOS

