

COMPACT 38N Hinge 105°

Product # 38N35810180

Overlay 5/8 in

Mounting Type Wrap-around Mount

Fixing Type Knock-In with Insertion Ram Only

Screw/Nail Not included

Packaging format Per unit

DESCRIPTION

COMPACT hinges are concealed hinges for face frame cabinets. They are easy to use and are adjustable in side, height, and depth dimensions. They also work with small and large overlays. COMPACT hinges are a great option for a wide variety of face frame applications.

ADVANTAGES AND BENEFITS

- 105° opening angle - One piece assembly - Wraparound or edge mount - 7/16" cup depth - $\pm 1/8$ " height adjustment - $\pm 1/16$ " side adjustment - $+3/32$ ", $-1/32$ " cam depth adjustment - Steel, nickel-plated

REQUIRED PRODUCTS

Requires the following products

Sales unit



Hand Insertion Tool

Product # ZME0710

TECHNICAL SPECIFICATIONS

Product #	38N35810180
Closing Mechanism	Spring Closing
Cabinet Type	Face Frame
Material	Steel
Hinge Type	COMPACT
Use Type	Standard Door
Door Position	Half Overlay
Door Thickness	Max. 3/4 in*
Plate Included	Yes
Milling Depth	7/16 in*
Milling Diameter	1 3/8 in*
Brand	Blum
Cabinet Thickness	Max. 3/4 in*
Hinge Opening Angle	+105°

Disclaimer

Measures shown with an asterisk (*) have been converted as per your preference. These are not the official measures. To view the measures specified by the manufacturer, [click here](#).

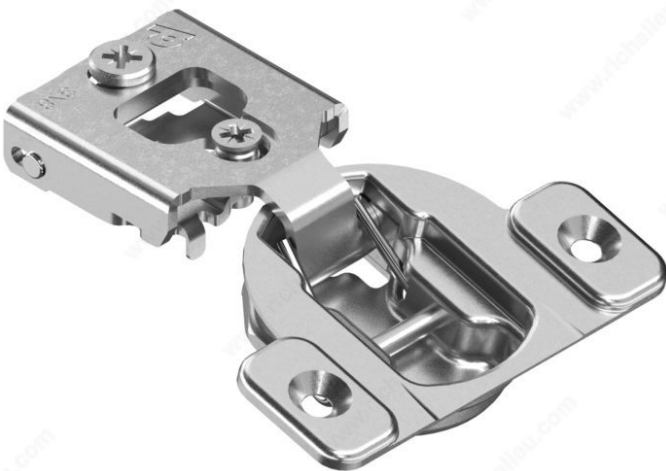
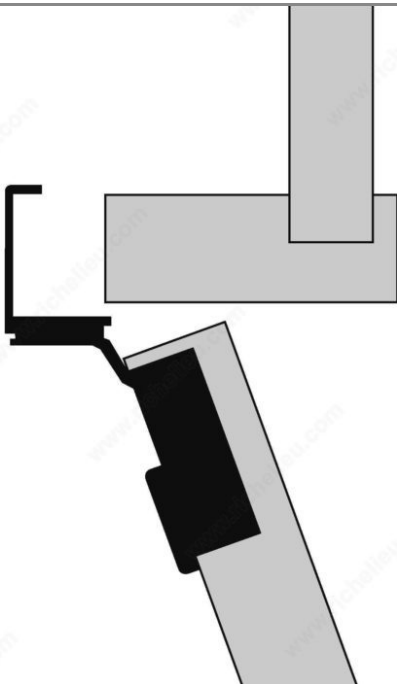
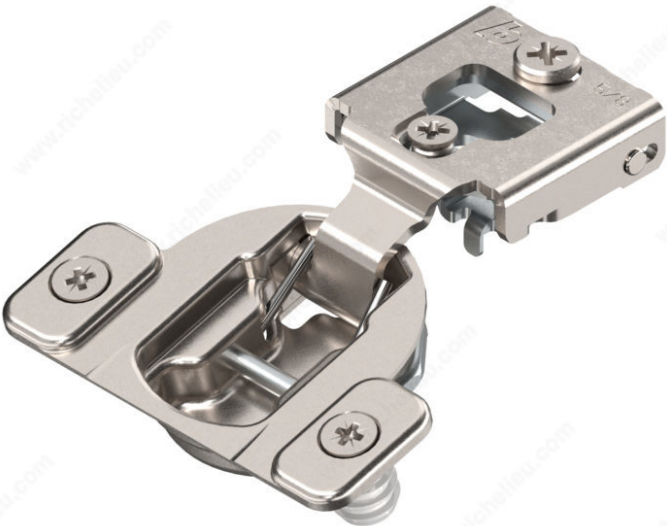
IMPORTANT INFORMATION

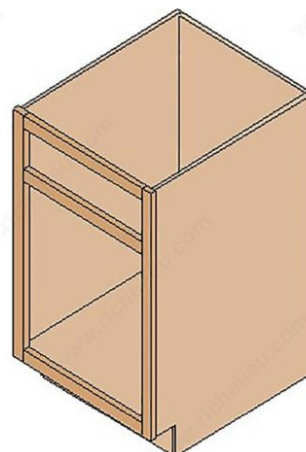
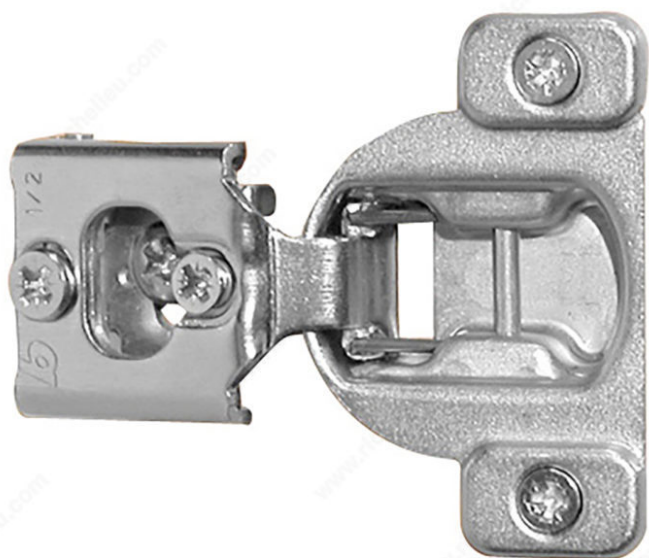
The best way to clean your Blum fittings is as follows: - Use a soft, lint-free cloth, a chamois leather or a sponge - Ensure that the material you use to wipe the furniture with is just damp, not wet - Always wipe the furniture again afterwards with a dry cloth - If possible, use cleaning products intended specifically for materials such as leather, stainless steel etc.; otherwise, use only clean water - Wipe off dirt as soon as it appears AVOID THE FOLLOWING: - using steam cleaners - using cleaning products, such as abrasive cleaning powder, steel wool and scourers, as well as cleaning agents, such as acetone, chlorine, cellulose thinner and solutions whose names start with tri or tetra - storing open cleaning products, baking powder, dishwasher products or table salt, for example. Fumes can cause corrosion on all metal surfaces.

APPLICATION

- For the installation of a door on a piece of furniture and/or a cabinet. - Blum hinges are not made of stainless steel, therefore it is not recommended to use them for outdoor applications.

PRODUCT PHOTOS





Armoire à cadre
Face Frame / Framed

