

Power Supplies 12V

Product # 51215

Watts 15 W

Length 5 1/16 in

Height 23/32 in

Width 1 13/16 in

Packaging format Box

DESCRIPTION

- LED drivers
- Four different watt maximums to choose from.

REQUIRED PRODUCTS

Requires ONE of the following products

Sales unit



Infrared Proximity Sensor for 12 V and 24 V

Product # 12624601

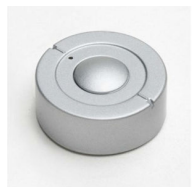
OR



TOUCH ME - Dimmer for LED 12V and 24V

Product # 152125601

OR



CALL ME - Switch with Receiver for LED 12V & 24V

Product # 152127010

TECHNICAL SPECIFICATIONS

Product #	51215
Lighting Type	LED
Compatibility	Micro 12
Finish	White
Standards and Certifications	ETL, cETLus
Group	LED Group A
IP	IP20
Tension (V)	12 V
Mounting	Surface

APPLICATION

- Dry locations only.

INCLUDED PRODUCT(S)

- 78 3/4" (2 m) power cable and terminal block with up to 10 ports for connecting 12 V lights.

IMPORTANT INFORMATION

- Item 51206 - Distributor with 10 connections available and 78 3/4 in (2 m) power cord included - 100-120 V ac - 0.5-6 W max - Item 51215 - Distributor with 10 connections available and 78 3/4 in (2 m) power cord included - 100-120 V ac - 1-15 W max - Item 51230 - Distributor with 10 connections available and 78 3/4 in (2 m) power cord included - 100-120 V ac - 3-30 W max - Item 51260 - Distributor with 10 connections available and 78 3/4 in (2 m) power cord included - 100-120 V ac - 2-60 W max

DISCLAIMER

- Product information subject to change. - Photo for visual reference only. - Always connect the LED light to the power supply first and then connect the power supply to the mains; failure to do so may cause damage to the existing diode. - Richelieu grants no warranty on LED lights if another power supply other than the one specifically prescribed for this product is used. - Do not exceed the maximum wattage by connecting more lights than prescribed; damage to the power supply may result. - Do not cut or splice wiring or the lighting system may be damaged and manufacturer's warranty is voided. - The power supply has a polarized plug (one blade is wider than the other) as a safety feature to reduce the risk of electric shock. This plug will fit in a polarized outlet only one way. If the plug does not fit fully in the outlet, reverse the plug. If it still does not fit, contact a qualified technician. Never use an extension cord unless the plug can be fully inserted. Do not alter the plug.

PRODUCT PHOTOS

