

## Power Supplies 12V

**Product #** 51260

**Watts** 60 W

**Length** 7 9/32 in\*

**Height** 1 7/32 in\*

**Width** 2 3/8 in\*

**Packaging format** Per unit

### DESCRIPTION

- LED drivers
- Four different watt maximums to choose from.

## REQUIRED PRODUCTS

Requires ONE of the following products

**Sales unit**



### Infrared Proximity Sensor for 12 V and 24 V

Product # 12624601

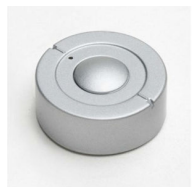
OR



### TOUCH ME - Dimmer for LED 12V and 24V

Product # 152125601

OR



### CALL ME - Switch with Receiver for LED 12V & 24V

Product # 152127010

## TECHNICAL SPECIFICATIONS

Product #	51260
Lighting Type	LED
Compatibility	Micro 12
Finish	White
Standards and Certifications	ETL, cETLus
Group	LED Group A
IP	IP20
Tension (V)	12 V
Mounting	Surface

### Disclaimer

Measures shown with an asterisk (\*) have been converted as per your preference. These are not the official measures. To view the measures specified by the manufacturer, [click here](#).

## APPLICATION

- Dry locations only.

## INCLUDED PRODUCT(S)

- 78 3/4" (2 m) power cable and terminal block with up to 10 ports for connecting 12 V lights.

## IMPORTANT INFORMATION

- Item 51206 - Distributor with 10 connections available and 78 3/4 in (2 m) power cord included - 100-120 V ac - 0.5-6 W max - Item 51215 - Distributor with 10 connections available and 78 3/4 in (2 m) power cord included - 100-120 V ac - 1-15 W max - Item 51230 - Distributor with 10 connections available and 78 3/4 in (2 m) power cord included - 100-120 V ac - 3-30 W max - Item 51260 - Distributor with 10 connections available and 78 3/4 in (2 m) power cord included - 100-120 V ac - 2-60 W max

## DISCLAIMER

- Product information subject to change. - Photo for visual reference only. - Always connect the LED light to the power supply first and then connect the power supply to the mains; failure to do so may cause damage to the existing diode. - Richelieu grants no warranty on LED lights if another power supply other than the one specifically prescribed for this product is used. - Do not exceed the maximum wattage by connecting more lights than prescribed; damage to the power supply may result. - Do not cut or splice wiring or the lighting system may be damaged and manufacturer's warranty is voided. - The power supply has a polarized plug (one blade is wider than the other) as a safety feature to reduce the risk of electric shock. This plug will fit in a polarized outlet only one way. If the plug does not fit fully in the outlet, reverse the plug. If it still does not fit, contact a qualified technician. Never use an extension cord unless the plug can be fully inserted. Do not alter the plug.

**PRODUCT PHOTOS**

