



Power Supplies 24Vdc

Product # 52475

Watts 75 W

Length 7 5/16 in

Height 1/32 in*

Width 2 3/8 in

DESCRIPTION

- Power supplies for new 24 V dc system
- Four different watt maximums to choose from

ADVANTAGES AND BENEFITS

- This high light output LED 24 V tape light provides a simple and effective way to light up any design.

REQUIRED PRODUCTS

Requires ONE of the following products

Sales unit



Infrared Proximity Sensor for 12 V and 24 V

Product # 12624601

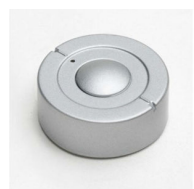
OR



TOUCH ME - Dimmer for LED 12V and 24V

Product # 152125601

OR



CALL ME - Switch with Receiver for LED 12V & 24V

Product # 152127010

TECHNICAL SPECIFICATIONS

Product #	52475
Compatibility	Micro 24
Standards and Certifications	ETL
Group	LED 24 V dc Exclusive
IP	IP20
Tension (V)	24 V

Disclaimer

Measures shown with an asterisk (*) have been converted as per your preference. These are not the official measures. To view the measures specified by the manufacturer, [click here](#).

IMPORTANT INFORMATION

- White finish - ETL certified for North America - 110-120Vac - Class 2 - Dimming occurs on the low voltage side using the required dimmers

INCLUDED PRODUCT(S)

- 78 3/4 in (2 m) power cable and terminal block with up to 10 ports for connecting 24 V lights.

APPLICATION

To be used with our exclusive 24Vdc lighting product line from Italy.

DISCLAIMER

- Indoor use only

PRODUCT PHOTOS

