



1to7 Frame

Product # 604519910

Product Dimensions - Width 15 3/4 in*

Min. Int. Width Required, Frameless Cabinet 16 1/4 in*

Thickness of Drawer Side Panels 3/4 in (19 mm)

Exterior Width of Cabinet 17 3/4 in*

DESCRIPTION

Frame for modular waste management system with LEGRABOX drawers

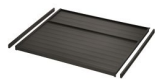
ADVANTAGES AND BENEFITS

- The base of this system is housed in a frame that is installed on a Blum LEGRABOX drawer with a 21 5/8 in (550 mm) depth and a C-height (sold separately).
- System designed for drawers with a 17 23/32 in (450 mm) or 23 5/8 in (600 mm) exterior width, and lateral panels with a 5/8 in (16 mm) or 3/4 in (19 mm) width.
- Once the frame is installed, you can choose bins according to your needs.
- Equipped with fixed inside lid to reduce odors and offer additional storage space (sold separately).
- Choice of bins of 35 L (9.24 gal) and 42 L (11.09 gal).
- Ergonomic handles on each bin for easy retrieval and manipulation, and to hold bags in place when closed.
- Individual bin lids available for 35 L (9.24 gal) and 42 L (11.09 gal) bins.
- Compost bin available separately to be hung inside one of the bins for a system with two or three bins.
- Trendy Orion gray color.

REQUIRED PRODUCTS

Requires the following products

Sales unit



Inside Lid for 1to7
Product # 514519910

Requires ONE of the following products

Sales unit



Bins for 1to7 system
Product # 5062910

Total Capacity: 37 qt*

Product Dimensions - Height: 18 1/2 in*

OR



Bins for 1to7 system
Product # 5074910

Total Capacity: 44.4 qt*

Product Dimensions - Height: 22 in*

TECHNICAL SPECIFICATIONS

Product #	604519910
Product Dimensions - Depth	Min. 21 5/8 in*
Material	Metal

Disclaimer

Measures shown with an asterisk (*) have been converted as per your preference. These are not the official measures. To view the measures specified by the manufacturer, [click here](#).

PRODUCT PHOTOS

