



## **Angled application +30° III CLIP top BLUMOTION Hinge**

**Product #** 79B9496180

### **DESCRIPTION**

#### **Integrated BLUMOTION**

Precise movement, like clockwork. Integrated BLUMOTION is a technical masterpiece that fits into the smallest of spaces and provides your furniture doors with silent, effortless closing.

CLIP top BLUMOTION is designed to open and close 200,000 times, with a compelling quality of motion, to last the lifetime of the furniture.

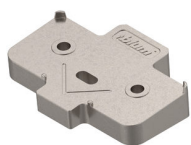
### **ADVANTAGES AND BENEFITS**

- Innovative technology concentrated into the smallest space, with BLUMOTION integrated into the hinge boss.
- Silent, effortless closing action provides every door with inspiringly perfect motion.
- Effortless closing even for small doors; BLUMOTION can optionally be deactivated.
- Elegant design for a high-quality look, with compelling technology in a stylish body.

## REQUIRED PRODUCTS

Requires ONE of the following products

Sales unit

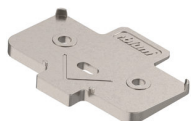


### Angled Spacer for Mounting Plate

Product # 171A5070180

Hinge Opening Angle:  
+5°

OR



### Angled Spacer for Mounting Plate

Product # 171A5500180

Hinge Opening Angle: -  
5°

Requires ONE of the following products

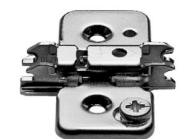
Sales unit



### BLUM Mounting Plate

Product # 175H916180

OR



### BLUM Mounting Plates with Adjusting Cam

Product # 173H710180

## TECHNICAL SPECIFICATIONS

Product #	79B9496180
Use Type	Angle Cabinet
Cabinet Angle	+30°, +25°, +35°
Cabinet Type	Frameless
Door Position	Angled Max. Overlay, Angled Overlay
Finish	Nickel
Cabinet Thickness	Min. 5/8 in*
Door Thickness	Min. 3/4 in*
Hinge Type	CLIP top BLUMOTION
Fixing Type	Inserta
Milling Depth	1/2 in*
Milling Diameter	1 3/8 in*
Hinge Opening Angle	+95°
Closing Mechanism	Soft-Closing
Brand	Blum

### Disclaimer

Measures shown with an asterisk (\*) have been converted as per your preference. These are not the official measures. To view the measures specified by the manufacturer, [click here](#).

## IMPORTANT INFORMATION

- Do not use a hammer to insert the hinge into the drill hole. - CLIP top BLUMOTION hinges should be operated within the temperature range of 18 °C and 28 °C to ensure optimal functioning.

## PRODUCT PHOTOS

