

Angled application +30° II CLIP top BLUMOTION Hinge

Product # 79B9596180

DESCRIPTION

Integrated BLUMOTION

Precise movement, like clockwork. Integrated BLUMOTION is a technical masterpiece that fits into the smallest of spaces and provides your furniture doors with silent, effortless closing.

CLIP top BLUMOTION is designed to open and close 200,000 times, with a compelling quality of motion, to last the lifetime of the furniture.

ADVANTAGES AND BENEFITS

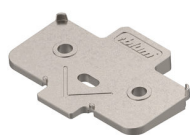
- Innovative technology concentrated into the smallest space, with BLUMOTION integrated into the hinge boss.
- Silent, effortless closing action provides every door with inspiringly perfect motion.
- Effortless closing even for small doors; BLUMOTION can optionally be deactivated.
- Elegant design for a high-quality look, with compelling technology in a stylish body.



REQUIRED PRODUCTS

Requires ONE of the following products

Sales unit

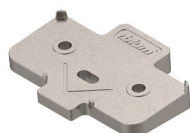


Angled Spacer for Mounting Plate

Product # 171A5010180

Distance: 1/32 in*

OR



Angled Spacer for Mounting Plate

Product # 171A5040180

Distance: 1/8 in*

Requires ONE of the following products

Sales unit



BLUM Mounting Plate

Product # 175H719180

OR



BLUM Mounting Plates with Adjusting Cam

Product # 173H710180

Plate height: 0 mm

OR



BLUM Mounting Plates with Adjusting Cam

Product # 173H713180

Plate height: 3 mm

TECHNICAL SPECIFICATIONS

Product #	79B9596180
Use Type	Angle Cabinet
Cabinet Angle	+30°, +25°, +35°
Cabinet Type	Frameless
Door Position	Angled Max. Overlay, Angled Overlay, Angled Mitered, Inset Angle
Finish	Nickel
Cabinet Thickness	Min. 3/4 in*
Door Thickness	Min. 3/4 in*
Hinge Type	CLIP top BLUMOTION
Fixing Type	Inserta
Milling Depth	1/2 in*
Milling Diameter	1 3/8 in*
Hinge Opening Angle	+95°
Closing Mechanism	Soft-Closing
Brand	Blum

Disclaimer

Measures shown with an asterisk (*) have been converted as per your preference. These are not the official measures. To view the measures specified by the manufacturer, [click here](#).

IMPORTANT INFORMATION

- Do not use a hammer to insert the hinge into the drill hole. - CLIP top BLUMOTION hinges should be operated in a temperature range of 18° C and 28° C to ensure optimal functionality.

PRODUCT PHOTOS

