

TERNO VETRO 40 Clamp Shoes with Covers

Product # 89K0328A12

Door Thickness 15/32 to 1/2 in*

Packaging format Set

DESCRIPTION

Does not require glass drilling

The TERNO VETRO 40 Clamp Shoe set with silver anodized covers for glass thickness of 3/8 in (10 mm) and 1/2 in (12.7 mm).

Features:

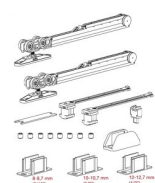
- Maximum weight capacity for two clamps of 264 lb (120 kg)
- Does not require glass drilling
- Low profile with 1 9/16 in (40 mm) height
- Silver anodized finish
- Compatible with TERNO VETRO hardware sets

ADVANTAGES AND BENEFITS

- Maximum weight capacity for two clamps of 264 lb (120 kg) - Does not require glass drilling
- Low profile with 1 9/16 in (40 mm) height

REQUIRED PRODUCTS

Requires the following products



TERNO VETRO 40 Hardware Sets

TECHNICAL SPECIFICATIONS

Product #	89K0328A12
Product type	Decorative Hardware
Door Material	Glass
Finish	Anodized Aluminum
Door Installation	Top Hung
Load Capacity	Max. 265 lb*
Manufacturing Material	Nylon, Aluminum, Plastic
Number of Doors	1
Door Height	8 ft 10 in*
Door Width	23 5/8 to 47 1/4 in*
Door Movement	Straight Sliding
Detailed Door Movement	Single sliding
Application	Standard Access Door

Disclaimer

Measures shown with an asterisk (*) have been converted as per your preference. These are not the official measures. To view the measures specified by the manufacturer, [click here](#).

INCLUDED PRODUCT(S)

- 4 profiles for clamps - 4 gasket strips - 4 end caps - 4 fascia covers - Screws and fasteners for individual components only

IMPORTANT INFORMATION

IMPORTANT: Use metric dimensions for greater accuracy during installation. - Please make sure to read the entirety of the installation manual before proceeding with the installation. - Wear safety gear such as gloves, safety glasses, safety shoes, and ear protection. - Every fastener used to attach the track to the wall must be fastened securely into a structural surface. - Always remove debris/dust/residues (sawdust and/or aluminum) from all tracks and guide channels using a dry cloth during installation and before operating the system. - Never spray lubricant on this product. - Do not exceed stated limitations and parameters. This will cause early wear and performance failure, and will void the warranty.

DISCLAIMER

Pictures provided for visual reference only: actual product may vary. - All required hardware should be ordered and obtained prior to initiating fabrication or installation work. Please verify that the parts and quantities listed in your order are correct before proceeding to checkout. - Always use instructions provided by the manufacturer, as included with the product. Manufacturer reserves the right to amend, modify, or otherwise supplement any previously issued product and/or technical information, as deemed required from time to time, without prior notice. - The documentation, drawings, and instructions on this page apply to the system described on this page only. Richelieu expressly declines all responsibility for any design or construction that combines this system with systems from this same manufacturer or systems from other manufacturers. - Installation of the product shall be executed by qualified individuals only, always ensuring that each product is securely installed using proper fixation methods, as appropriate for each applicable substratum. We trust that anyone installing these products has the required skills, knowledge, and experience. Richelieu expressly disclaims any liabilities for results obtained through improper use or installation.

PRODUCT PHOTOS

