



Modern Metal Pull - 2288

Product # BP228812140

Center to Center 12 in

Finish Chrome

Length - Overall Dimensions 12 3/8 in*

DESCRIPTION

BHMA A156.9 certificate, Compliant with RoHS directive

This timeless modern metal pull combines durability and distinctiveness with the convenience of easy installation. A durable handle with rounded corners that make it very user friendly for any application.

ADVANTAGES AND BENEFITS

BHMA (Builders Hardware Manufacturers Association) - ANSI/BHMA A156.9 Certificate The tested products met or exceeded the standard minimal requirements. Richelieu is among the companies that meets the standard AINSI/BHMA requirements for: - Durability - Strength - Performance - Security The European Community Directive RoHS 2 (2011/65/EU) on the Restriction of Hazardous Substances (commonly known as the RoHS Directive) aims to eliminate or limit certain substances that are dangerous to the environment and to people. The RoHS directive specifies maximum levels for restricted substances. Tested products are RoHS compliant* and are: - Lead-free - Mercury-free - Cadmium-free - Hexavalent chromium-free Report No. TR20161205 Date: 2016-03-22 *Based on information provided by an independent lab.

TECHNICAL SPECIFICATIONS

| | |
|--|------------------------|
| Product # | BP228812140 |
| Pulls and Knobs Style | Functional |
| Type | Functional Models |
| Standards and Certifications | BHMA, RoHS |
| Material | Steel |
| Diameter - Overall Dimensions | 5/16 in* |
| Width - Overall Dimensions | 5/16 in* |
| Screw/Nail | 8/32 in (Included) |
| Color Group | Gray and Chrome Group |
| Finish Number | 140 |
| Suggested Price | From \$5.00 to \$10.00 |
| Projection - Overall Dimensions | 1 3/16 in* |

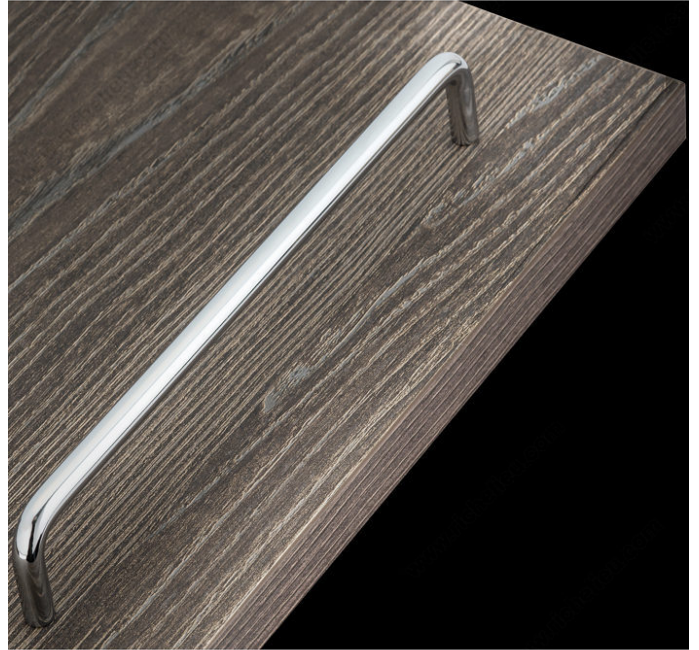
Disclaimer

Measures shown with an asterisk (*) have been converted as per your preference. These are not the official measures. To view the measures specified by the manufacturer, [click here](#).

DISCLAIMER

Although our black finish is achieved through a rigorous process, it may show signs of normal wear faster than other finishes.

PRODUCT PHOTOS



BHMATM
CERTIFIED

