



Modern Metal Pull - 2288

Product # BP2288256140

Center to Center 10 1/8 in*

Finish Chrome

Length - Overall Dimensions 10 3/8 in*

DESCRIPTION

BHMA A156.9 certificate, Compliant with RoHS directive

This timeless modern metal pull combines durability and distinctiveness with the convenience of easy installation. A durable handle with rounded corners that make it very user friendly for any application.

ADVANTAGES AND BENEFITS

BHMA (Builders Hardware Manufacturers Association) - ANSI/BHMA A156.9 Certificate The tested products met or exceeded the standard minimal requirements. Richelieu is among the companies that meets the standard AINSI/BHMA requirements for: - Durability - Strength - Performance - Security The European Community Directive RoHS 2 (2011/65/EU) on the Restriction of Hazardous Substances (commonly known as the RoHS Directive) aims to eliminate or limit certain substances that are dangerous to the environment and to people. The RoHS directive specifies maximum levels for restricted substances. Tested products are RoHS compliant* and are: - Lead-free - Mercury-free - Cadmium-free - Hexavalent chromium-free Report No. TR20161205 Date: 2016-03-22 *Based on information provided by an independent lab.

TECHNICAL SPECIFICATIONS

Product #	BP2288256140
Pulls and Knobs Style	Functional
Type	Functional Models
Standards and Certifications	BHMA, RoHS
Material	Steel
Diameter - Overall Dimensions	5/16 in*
Width - Overall Dimensions	5/16 in*
Screw/Nail	8/32 in (Included)
Color Group	Gray and Chrome Group
Finish Number	140
Suggested Price	From \$5.00 to \$10.00
Projection - Overall Dimensions	1 3/16 in*

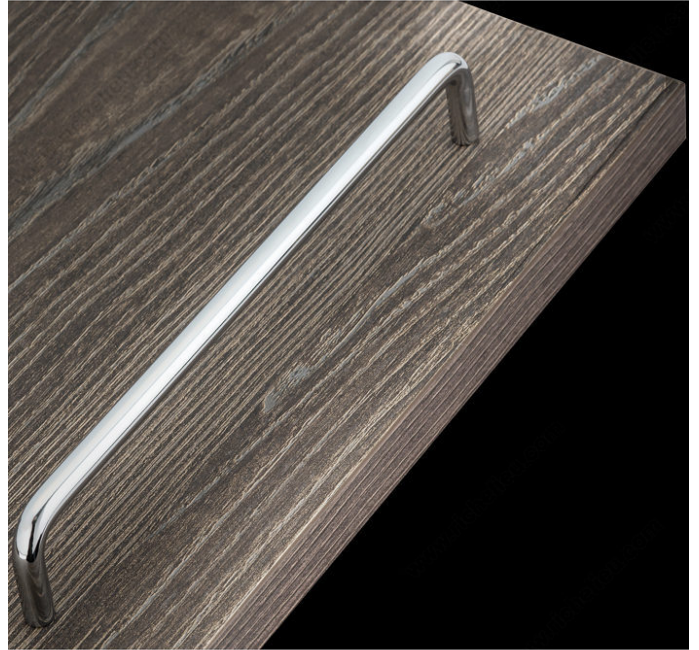
Disclaimer

Measures shown with an asterisk (*) have been converted as per your preference. These are not the official measures. To view the measures specified by the manufacturer, [click here](#).

DISCLAIMER

Although our black finish is achieved through a rigorous process, it may show signs of normal wear faster than other finishes.

PRODUCT PHOTOS



BHMATM
CERTIFIED

