

Rev-A-Shelf jewelry Drawer with Slides

Product # CJD2414

DESCRIPTION

Sliding drawer for jewelry storage management

Keep your jewelry organized and in meticulous condition with the CJD series jewelry drawer from Rev-A-Shelf. The CJD2414 system is easily installed with system holes and features full-extension ball bearing slides, and drawer head mounting capability. Used in coordination with the CJDIS (Jewelry) and CJDIN (Necklace) inserts, customizing and care have never been easier.

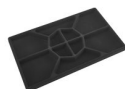
ADVANTAGES AND BENEFITS

- The CJD-2414 system is easily installed with system holes - Features 100 lb (45 kg) full-extension ball bearing slides - Used in coordination with the CJD-IS (Jewelry) and CJD-IN (Necklace) inserts, customizing and care have never been easier - Rev-A-Shelf limited lifetime warranty

REQUIRED PRODUCTS

Requires ONE of the following products

Sales unit



Rev-A-Shelf jewelry Drawer Standard Insert
Product # CJD2415

OR



Rev-A-Shelf jewelry Drawer Necklace Insert
Product # CJD24IN

TECHNICAL SPECIFICATIONS

Product #	CJD2414
Application	Jewels
Product Type	Drawers and Dividers
Collection	Rev-a-Shelf
Product Dimensions - Width	24 in
Product Dimensions - Depth	14 in
Product Dimensions - Height	1 7/8 in
Finish	Black
Material	Wood
Interior Dimensions Required - Width	Min. 24 in
Interior Dimensions Required - Depth	Min. 14 in
Interior Dimensions- Height Requirements	Min. 1 7/8 in
Soft-close	No
Weight Capacity	100 lb
Type of Cabinet	Closet

INCLUDED PRODUCT(S)

- Includes wood drawer with mounting hardware - Slide type: 100 lb (45 kg) full-extension ball bearing

IMPORTANT INFORMATION

- Inserts not included.

PRODUCT PHOTOS

