



Center Partition Post

Product # EXP3172

DESCRIPTION

Designed for easy installation, recessed channels for 1/4" glass.

REQUIRED PRODUCTS

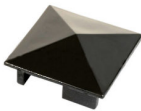
Requires the following products

Sales unit



Metal Base for Partition Counter Post
Product # GMP3290

AND



Pyramid Cap for Partition Counter Post
Product # GMP3297

TECHNICAL SPECIFICATIONS

Product #	EXP3172
Finish	Satin Aluminum
Glass Thickness	1/4 in
Length	73 in
Material	Anodized Aluminum
Width	1 5/16 in
Type	Counter Partition Posts and Accessories

APPLICATION

Ideal for banks, offices, restaurants and reception areas.

INCLUDED PRODUCT(S)

Kits completos que incluyen: 1 base, 1 tapa y 1 poste. Tornillos no incluidos.

IMPORTANT INFORMATION

For safety purposes, use tempered glass. Always set the product in a suitable material. Never exceed the load or maximum size recommended by the manufacturer. Maintenance: clean with a soft cloth and non-abrasive soap or ammonia. This illustration is provided for visual reference only. Actual product may differ from the illustration. Order hardware before starting the job. The manufacturer reserves the right to change product and information without notice. The customer may in no case make a claim following the use of these documents. The Company disclaims any responsibility for the structural details related to a construction or project. Installation must be done by qualified personnel. Always make sure that the product is properly installed using suitable fixings to the support material.

DISCLAIMER

The preceding information as well as any technical recommendation given in writing, verbally or based on tests is provided to the best of our knowledge. However, recommendations are non-binding and do not diminish your responsibility for determining the correctness of these recommendations and the suitability of the product for your particular purpose. The application, use or processing of our products as well as the production of products based on our technical recommendations are beyond our control and therefore exclusively your responsibility. Sales of our products are subject to our most recent General Sales and Delivery Conditions. Please note that Richelieu will not accept any returns or claims for unpackaged products.

PRODUCT PHOTOS



