



## OPTIMIZ-R 89 mm Set for Standard Drawers

**Product #** WEBKIT1220067

**Length** 10 5/8 in\*

**Adjustment (FLD Clips)** 6 ways - Height, Lateral, and Depth

**Finish** Anthracite

### DESCRIPTION

#### Set of 10 OPTIMIZ-R standard metal drawers

This metal drawer system with 89 mm (3 1/2") height allows you to maximize your storage space with a streamlined design. Offers a smooth and soft-closing movement when paired with our 828 Concealed Synchronized Slides.

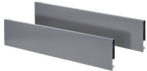
Minimum purchase requirement of 10 sets.

### ADVANTAGES AND BENEFITS

- Designed and developed in North America - Does not require additional cutting on the drawer bottom - Streamlined side panels, no visible caps or notches - Several drawer adjustment possibilities (side, height and depth) in addition to the existing locking slide mechanisms - Works well with our 828 Concealed Hybrid Slides, enabling you to create a drawer made of wood or metal

## INCLUDED IN THIS WEBKIT

**Sales unit**



#### OPTIMIZ-R Drawer Sides

Product # 8088927100

Pair



#### Series 828 - Full Extension Synchronized Concealed Undermount Slide with Soft-Close

Product # 828270

Pair



#### Locking Device for Richelieu Slides 828

Product # 8286103

Side: Left



## Locking Device for Richelieu Slides 828

Product # 8286102

Side: Right

## TECHNICAL SPECIFICATIONS

Product #	WEBKIT1220067
Drawer Use	Standard
Configuration	Standard Panels
Height	3 1/2 in*
Load Capacity	99.2 lb*
Material	Steel
Slide Extension	Full Extension
Application	General Storage
Slide Mounted	Undermounted
Cabinet Model	Frameless
Product Line	Richelieu
Brand	Richelieu

### Disclaimer

Measures shown with an asterisk (\*) have been converted as per your preference. These are not the official measures. To view the measures specified by the manufacturer, [click here](#).

## APPLICATION

Set designed for standard drawer assembly

## INCLUDED PRODUCT(S)

- 1 pair of 828 slides - 1 metal drawer side - 1 pair of covers with logo - 1 pair of doweled fixing brackets (included in the drawer side packaging) - 1 pair of locking devices Minimum purchase requirement of 10 sets.

## PRODUCT PHOTOS

