



OPTIMIZ-R Set for Drawers with Gallery Rails - 89 mm

Product # WEBKIT1224111

Length 15 3/4 in*

Adjustment (FLD Clips) 6 ways - Height, Lateral, and Depth

Finish Anthracite

DESCRIPTION

Set of 10 metal OPTIMIZ-R drawers with gallery rails

Create the perfect drawer with the height of your choice by combining our 89 mm OPTIMIZ-R drawer sides and gallery rails.

These rectangular rails offer a modern and streamlined look.

Offers a smooth and soft-closing movement when paired with our 828 Concealed Synchronized Slides.

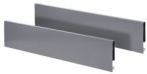
Minimum purchase of 10 sets.

ADVANTAGES AND BENEFITS

- Designed and developed in North America - Does not require additional cutting on the drawer bottom - Streamlined side panels, no visible caps or notches - Several drawer adjustment possibilities (side, height and depth) in addition to the existing locking slide mechanisms - Works well with our 828 Concealed Hybrid Slides, enabling you to create a drawer made of wood or metal

INCLUDED IN THIS WEBKIT

Sales unit



OPTIMIZ-R Drawer Sides
Product # 8088940100

Pair



Series 828 - Full Extension Synchronized Concealed Undermount Slide with Soft-Close
Product # 828400

Pair



Locking Device for Richelieu Slides 828
Product # 8286103

Side: Left

**Locking Device for Richelieu Slides 828**

Product # 8286102

Side: Right

**Gallery Rail OPTIMIZ-R**

Product # 808LG1400MP106

Pair

TECHNICAL SPECIFICATIONS

Product #	WEBKIT1224111
Drawer Use	Standard
Configuration	Rectangular Tube, Standard Panels
Height	3 1/2 in*
Load Capacity	99.2 lb*
Slide Extension	Full Extension
Motion Technology	Soft-Close
Slide Mounted	Undermounted
Product Line	Richelieu
Brand	Richelieu

Disclaimer

Measures shown with an asterisk (*) have been converted as per your preference. These are not the official measures. To view the measures specified by the manufacturer, [click here](#).

PRODUCT PHOTOS

