



Dispensa Arena US System for Interior Height of 2 m to 2.3 m (78 3/4" to 90 1/2")

Product # WEBKIT1226159

Opening Width Min. 8 1/2 in

Finish Chrome and White

DESCRIPTION

Complete pull-out sliding shelf system that lets you see the contents of your pantry cabinet at a glance!
Grey frame supports a load of up to 330 lb (150 kg).

ADVANTAGES AND BENEFITS

- Equipped with Arena shelves featuring an anti-slip maple melamine surface for enhanced stability and noise reduction. - Provides full access to the cabinet interior in a single motion. - Equipped with a shock-absorbing mechanism for soft closing.

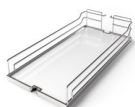
INCLUDED IN THIS WEBKIT

Sales unit



Frames for Dispensa Arena US System

Product # 24383100



Arena Baskets for Dispensa Arena US and BPO II Systems

Product # 2514030

Box of 2

TECHNICAL SPECIFICATIONS

Product #	WEBKIT1226159
Interior Dimensions Required - Depth	Min. 22 1/16 in
Interior Dimensions Required - Height	74 3/4 to 90 1/2 in
Solutions	Wall Unit and Pantry Cabinets
Area of Activity	Food Storage, Storage
Cabinet Type	Face Frame Cabinet, Frameless Cabinet

APPLICATION

- For installation on the bottom and top interior of your pantry

IMPORTANT INFORMATION

Please consult the instruction documents in case of adjustment issues or product malfunctions

INCLUDED PRODUCT(S)

The door brackets are included with the frame

PRODUCT PHOTOS

