



HAWA PORTA H/HC Sliding Systems

Product # WEBKIT1243287

Detailed Door Movement Single sliding

Track Mounting Wall Mount

Load Capacity 66.1 to 132 lb*

Overall Length 11 ft 5 in*

Soft-Closing Yes

Number of Doors 1

Door Width 33 1/8 to 63 in*

DESCRIPTION

Wall and ceiling track

The HAWA PORTA H/HC Sliding Systems are designed for ceiling and wall mount applications for sliding wood doors weighing up to 60 kg or 100 kg each.

Features:

- Surface-mount suspension plate
- Track stoppers with adjustable retaining device
- Choose from three system types for diverse applications:
 - 1) System H for ceiling mount
 - 2) System HC for wall mount (barn door style) with aluminum fascia or clips for wood fascia
 - 3) System SYNCHRO for bi-parting doors synchronized with a pulley system
- Soft-close mechanisms available for doors 40 kg to 60 kg, and 60 kg to 100 kg, sold separately
- Simple and flexible installation
- Telescopic operation possible for up to two doors with stacking set without bottom guide track, accessories sold separately

IMPORTANT: Use metric dimensions for greater accuracy during installation.

Cut a groove 12 mm x 16 mm at the bottom of the door for bottom guide.

Minimum door width for two doors is 840 mm.

Soft-close mechanism not recommended for SYNCHRO system.

Ideal solution for residential and commercial applications for standard doorways, walk-in closets, and office entrance doors.

ADVANTAGES AND BENEFITS

- Suitable for three types of applications: ceiling mount, wall mount, and bi-parting - SYNCHRO system to synchronize two doors - Simple and flexible installation

INCLUDED IN THIS WEBKIT

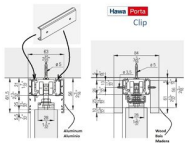
Sales unit



Integrated Soft-Close System for Sliding Door

Product # 893102072

Box



HAWA PORTA CLIP
Product # 890573117001



HAWA PORTA Plastic End Cap
Product # 890573132072

Bag



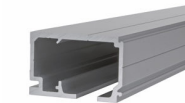
HAWA PORTA Clip-On Fascia
Product # 890423004350

Length of 3.5
linear meter



Bottom door stop with centering assembly
Product # 8920773174

Bag



HAWA PORTA Wall Mount Track
Product # 893112350

Length of 3.5
linear meter



HAWA PORTA H/HC Hardware Set
Product # 890573138071

Bag

TECHNICAL SPECIFICATIONS

Product #	WEBKIT1243287
Door Material	Wood
Door Thickness	1 3/32 to 1 9/16 in*
Roller Type	Ball Bearing
Application	Closet and Walk-In Closet, Standard Access Door, Barn Door
Brand	Hawa
Opening	Left arm, Right arm
Track type	Box Track
Running Track Fixing	Surface Mount
Finish	Anodized, Anodized Aluminum
Groove Depth	5/8 in*
Door Installation	Top Hung
Door Height	59 to 106 in*
Groove Width at the Bottom of Door	15/32 in*
Brand Model	Hawa Porta

Disclaimer

Measures shown with an asterisk (*) have been converted as per your preference. These are not the official measures. To view the measures specified by the manufacturer, [click here](#).

IMPORTANT INFORMATION

IMPORTANT: - Use metric dimensions for greater accuracy during installation. - Cut a groove 12 mm x 16 mm at the bottom of the door for bottom guide. - Please make sure to read the entirety of the installation manual before proceeding with the installation. - Wear safety gear such as gloves, safety glasses, safety shoes, and ear protection. - Every fastener used to attach the track to the wall must be fastened securely into a structural surface. - Always remove debris/dust/residue (sawdust and/or aluminum) from all tracks and guide channels using a dry cloth during installation and before operating the system. - Never spray lubricant on this product. - Do not exceed stated limitations and parameters. This will cause early wear and performance failure, and will void the warranty.

DISCLAIMER

- Pictures provided for visual reference only: actual product may vary. - All required hardware should be ordered and obtained prior to initiating fabrication or installation work. Please verify that the parts and quantities listed in your order are correct before proceeding to checkout. - Always use instructions provided by the manufacturer, as included with the product. Manufacturer reserves the right to amend, modify, or otherwise supplement any previously issued product and/or technical information, as deemed required from time to time, without prior notice. - The documentation, drawings, and instructions on this page apply to the system described on this page only. Richelieu expressly declines all responsibility for any design or construction that combines this system with systems from this same manufacturer or systems from other manufacturers. - Installation of the product shall be executed by qualified individuals only, always ensuring that each product is securely installed using proper fixation methods, as appropriate for each applicable substratum. We trust that anyone installing these products has the required skills, knowledge, and experience. Richelieu expressly disclaims any liabilities for results obtained through improper use or installation.

PRODUCT PHOTOS

