



HAWA-Junior A Series Straight Sliding Door System

Detailed Door Movement

Biparting

Bypassing

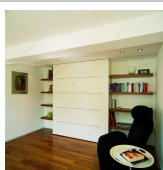
Single sliding

Load Capacity

353 lb*

551 lb*

Application



Sliding Wall


Screen Panel
/ Standard
Access Door /
Pocket Door

Overall Length

9 ft 10 in*

13 ft 1 in*

16 ft 4 in*

19 ft 8 in*

26 ft 2 in*

Number of Doors

1

2

Door Width

36 to 49 1/4
in*

36 to 59 in*

36 to 78 3/4
in*

39 3/8 to 59
in*

39 3/8 to 78
3/4 in*

39 3/8 to 118
in*

DESCRIPTION

Adjustable integrated track stopper

The HAWA-Junior A Series are standard straight sliding systems for wood doors weighing from 264 lb to 550 lb (120 kg to 250 kg) each.

Features:

- Series: Junior 120/A, 160/A, and 250/A
- Surface top mount galvanized suspension plate
- Integrated track stoppers with adjustable retaining device to resist door bounce back
- Versatile track options for single sliding, biparting, and bypassing applications
- Premium performance trolleys that are smooth and quiet
- Available SoftMove 120 soft-close mechanism for doors weighing 264 lb (120 kg)

The HAWA-Junior A Series is an ideal solution for commercial and premium residential projects, wall partitions, and pocket doors.

ADVANTAGES AND BENEFITS

- Simple to install - Secure suspension bracket - Quiet action

AVAILABLE PRODUCTS

Product #	Detailed Door Movement	Load Capacity	Application	Overall Length	Number of Doors	Door Width
WEBKIT1236452	Biparting	353 lb*	Sliding Wall	16 ft 4 in*	2	36 to 49 1/4 in*
WEBKIT1236453	Biparting	353 lb*	Sliding Wall	19 ft 8 in*	2	36 to 59 in*
WEBKIT1236454	Biparting	551 lb*	Sliding Wall	19 ft 8 in*	2	39 3/8 to 59 in*
WEBKIT1236455	Bypassing	551 lb*	Sliding Wall	26 ft 2 in*	2	39 3/8 to 118 in*
WEBKIT1216570	Single sliding	353 lb*	Sliding Wall	13 ft 1 in*	1	36 to 78 3/4 in*
WEBKIT1216569	Single sliding	353 lb*	Screen Panel / Standard Access Door / Pocket Door	9 ft 10 in*	1	36 to 59 in*
WEBKIT1216574	Single sliding	551 lb*	Sliding Wall	13 ft 1 in*	1	39 3/8 to 78 3/4 in*
WEBKIT1216575	Single sliding	551 lb*	Sliding Wall	19 ft 8 in*	1	39 3/8 to 118 in*

TECHNICAL SPECIFICATIONS

Door Material	Wood
Door Movement	Straight Sliding
Track Mounting	Ceiling Mount
Door Thickness	1 9/16 to 3 5/32 in*
Roller Position	Upper
Brand	Hawa
Door Installation	Top Hung
Door Height	Max. 11 ft 11 in*
Brand Model	Hawa Junior

Disclaimer

Measures shown with an asterisk (*) have been converted as per your preference. These are not the official measures. To view the measures specified by the manufacturer, [click here](#).

IMPORTANT INFORMATION

- Pictures provided for visual reference only: actual product may vary. - All required hardware should be ordered and obtained prior to initiating fabrication or installation work. Please verify that the parts and quantities listed in your order are correct before proceeding to checkout. - Always use instructions provided by the manufacturer, as included with the product. Manufacturer reserves the right to amend, modify, or otherwise supplement any previously issued product and/or technical information, as deemed required from time to time, without prior notice. - The documentation, drawings, and instructions on this page apply to the system described on this page only. Richelieu expressly declines all responsibility for any design or construction that combines this system with systems from this same manufacturer or systems from other manufacturers. - Installation of the product shall be executed by qualified individuals only, always ensuring that each product is securely installed using proper fixation methods, as appropriate for each applicable substratum. We trust that anyone installing these products has the required skills, knowledge, and experience. Richelieu expressly disclaims any liabilities for results obtained through improper use or installation. - Always remove debris/dust/residues (sawdust and/or aluminum) from all tracks and guide channels using a dry cloth during installation and before operating the system. - Never spray lubricant.

DISCLAIMER

By accessing or referring to this document, or by using any of Richelieu's websites, you accept all applicable terms as they apply from time to time. This legal disclaimer is in no way limited or altered by any other terms or conditions. Richelieu may change said terms at its discretion and without prior notice. A version of the most current terms will always be available on Richelieu's website. The preceding information and technical documentation, information, or recommendations issued by Richelieu verbally or in writing is believed to be accurate and is given in good faith, but no representation of warranty as to its completeness or accuracy is made. Suggestions for use or application are only opinions. Users are responsible for determining the suitability of these products for their own particular purpose. No representation of warranty, expressed or implied, is made with respect to information or products including, without limitation, warranties or merchantability, fitness for particular purpose, non-infringement of any third party patent or other intellectual property rights including, without limit, copyright, trademark, and designs. Any trademarks identified herein are trademarks of the Richelieu group of companies. Richelieu assumes no risk and shall not be subject to any liability for damages or loss resulting from the specific use or application made of the product. Richelieu's liability for any claim, whether based on breach of contract, negligence, or infringement of any rights of any party relating to the product shall not exceed the price paid for said products. In no event shall Richelieu be liable for any special, incidental, or consequential damages (including loss of use, loss of profit, and claims of third parties) however caused, whether by the negligence of Richelieu or otherwise. Products returned for warranty purposes shall be subject to Richelieu's then applicable Return Policy.

PRODUCT PHOTOS

